

YS-132NO

Electrical door openers

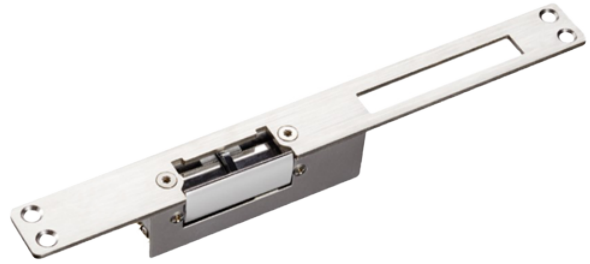
For single doors

Fail Secure (NO) aperture mode

Holding force 500 kg

Power supply DC 12V

Recessed mounting | Socket



Electrical door openers

Fail Secure operation (NO)

Mounting on wood and metal doors

With lock socket

Stainless steel

Load resistance 500 kg

12 VDC

Specifications

Mounting	Built-in
Opening mode	Fail Secure (NO)
Retention force	500 kg
Functions	Bolt hole for deadbolt
Power	DC 12 V / 200 mA máx.
Material	Stainless steel
Dimensions	25 (W) x 250 (H) x 31 (D) mm
Weight	400 g