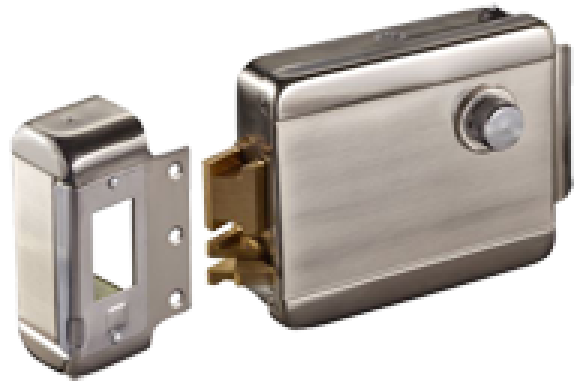


# ABK-702A-R

Electromechanical surface lock  
Fail Safe (NC) opening mode  
Applicable in Fire Protection Systems  
LED status indicator  
Programmable self-closing  
Opening to the right



Electromechanical Security Lock for surface mounting  
NC Normally Open (Fail Safe)  
Open door signal  
Door sensor  
Applicable in Fire protection systems  
It has status LED  
Installation in Wooden, Metal, Glass and Fire doors  
Anti-sabotage lock  
12 VDC  
Opening to the right

# Specifications

Mounting	Surface
Opening mode	Fail Safe (NC)
Locking delay time	9 seconds in case of no opening / in case of opening it locks in 1 second by sensor detection
Bolt length	20 mm
Power supply	DC 12 V/ 1.5- 3A
Open sensor	Integrated LED indicator, exit indicator.
Plate dimensions	34.5 (d) x 126(Al) x 102 (w) mm
Weight	1.45 Kg
Temperature	-40° C ~ +50° C