

MC-SMMC-A1

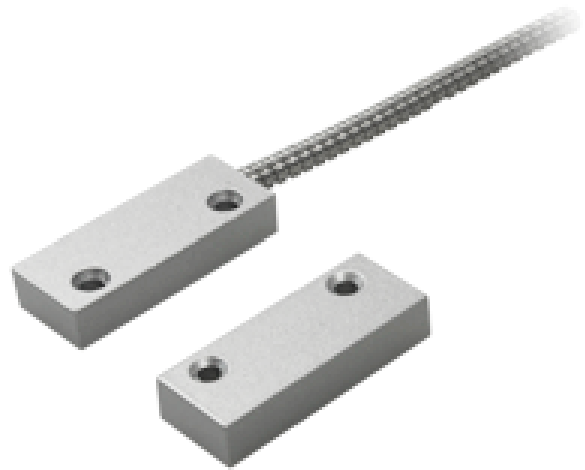
Magnetic contact

Suitable for metal installation

Reed Detection Technology

Connection system of 2 wires
protected by metal mesh

Resistance to mechanical and
electrical shocks



Magnetic surface detector

Reed Technology

High power

Suitable for metal installation

Resistance to mechanical and electrical shocks

System of 2 wires protected by metal mesh

Specifications

Technology	Reed
Power	High power
Maximum detection distance	Up to 30mm depending on the material where it is installed
Material	Metallic
Cable	2 wires protected by metal mesh
Magnet	Neodymium
Resistance to mechanical shocks	Up to 15KgS
Electrical parameters	100 VDC/VAC max, 500mA, 10W
Dimensions	Detector: 49 (W) x 9.6 (H) x 20 (D) mm Magnet: 49 (W) x 9.6 (H) x 20 (D) mm