

# MC-SWPC-M1

Magnetic contact

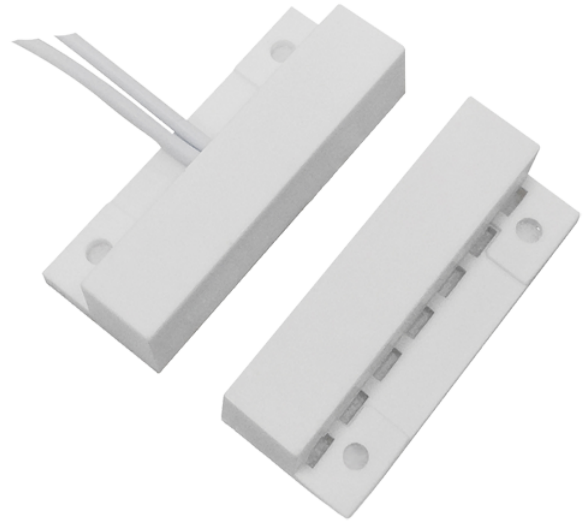
Suitable for installation in wood

Reed Detection Technology

Connection system by 2 wires

Resistance to mechanical and  
electrical shocks

Reduced size



Magnetic surface detector

Reed Technology

Suitable for installation in wood

Resistance to mechanical and electrical shocks

2-wire system

# Specifications

Technology	Reed
Power	Medium power
Maximum detection distance	Up to 20mm depending on the material where it is installed
Material	Plastic
Cable	2 wires
Magnet	Neodymium
Resistance to mechanical shocks	Up to 14KgS
Electrical parameters	100 VDC/VAC max, 500mA, 10W
Dimensions	Detector: 33.5 (W) x 13.5 (H) x 7.5 (D) mm Magnet: 33.5 (W) x 13.5 (H) x 7.5 (D) mm