

JUNIOR FAMILY

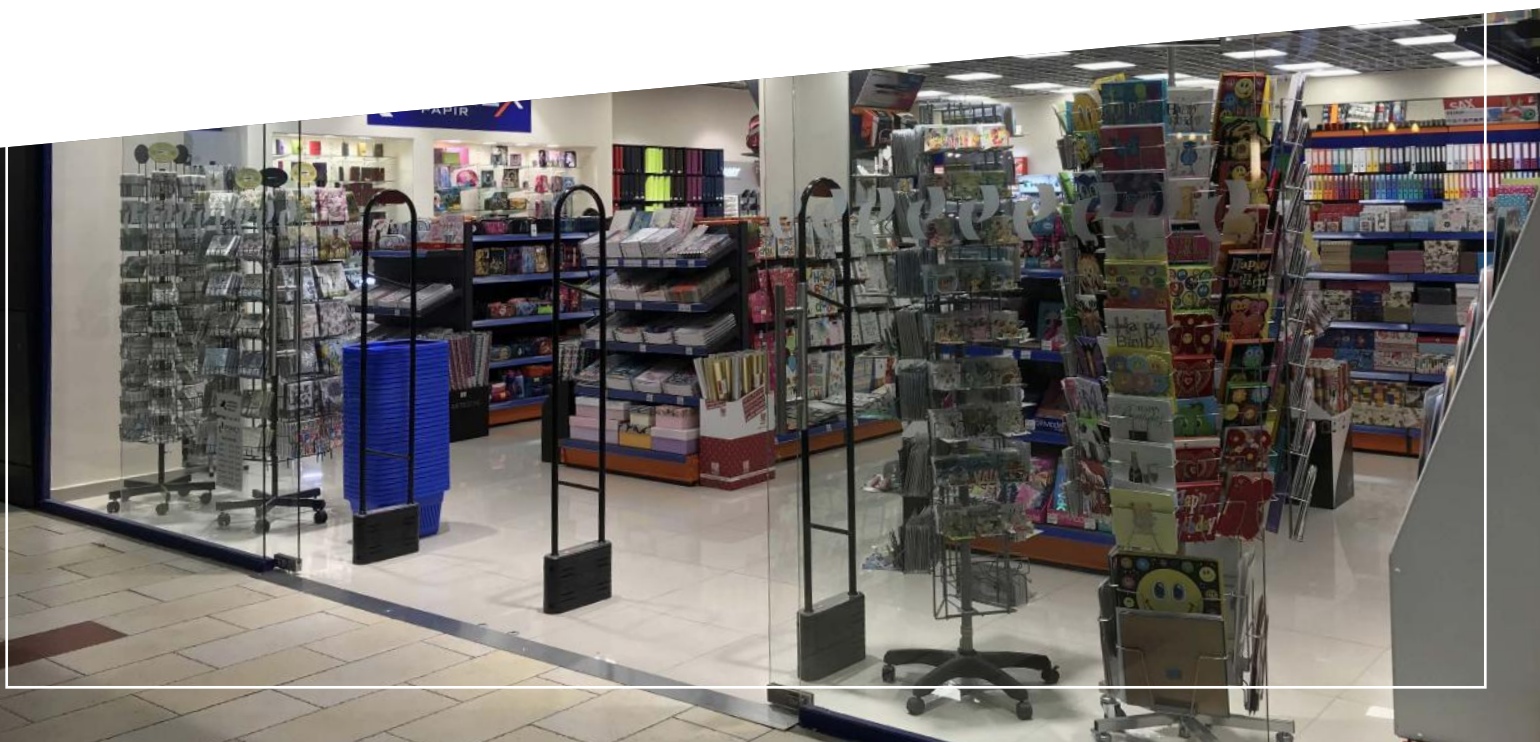
JUNIOR IS ONE OF THE MOST SUCCESSFUL ANTENNA OF SHOPGUARD THANKS TO ITS RELIABILITY AND VERSATILITY. PRICEWISE IT IS SIMPLY UNBEATABLE. AVAILABLE IN TX-RX AND TRX VERSIONS.

All the major tags and accessories are compatible with the product:

- hard tags
- ink tags
- soft tags, paper labels
- safers
- detaching and deactivator products
- spider wraps

BENEFITS

- fits to any entrance and cashier size
- durable body (steel tube)
- simple and clean “see-through” design
- audible and visible alarm and feedback
- floor antenna can be controlled by it



Junior RF Tx / Rx

P0200009 / P0200010

General Info

Family	Junior
Size	Normal
Type	Tx / Rx system

Recommendation

4x4 paper label

	metric	imperial
Norm/Max Distance*	2,6/3m	102/118in
Norm/Max On side*	1,3/1,5m	51/59in

Recommendation

round hardtag

	metric	imperial
Norm/Max Distance*	2,4/3,8m	94/150in
Norm/Max On side*	1,7/1,9m	47/75in

Dimension

Height	1,622m	64in
Width	0,355m	14in
Depth (thickness)	0,083m	3.3in
Approx. weight	8kg	17.6lbs

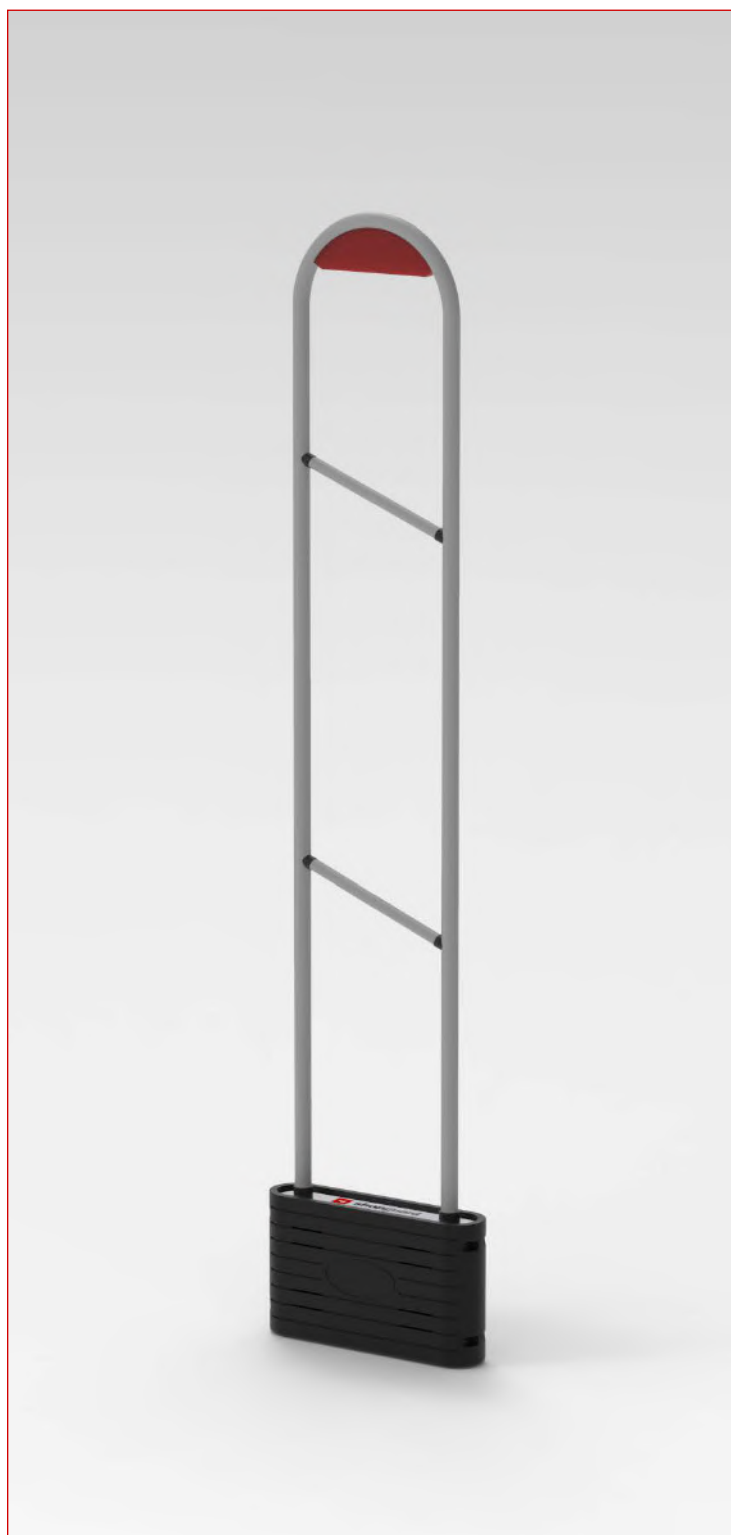
Electrical Requirements

PSU	18V AC
Power Consumption	520mA / 9,36W
Operating Temp.	0 - 40 °C 32 - 104 °F

Other

Antenna Safety	CB, UL/cUL
Emissions Safety	FCC/IC, CE
Materials Used	Steel body, plastic housing

*detection distance may vary, depends on
environment and **tag type**.



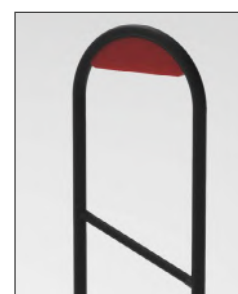
Available colours



silver



anthracite



black

Tx/Rx duo

TRx Alternating Field