

JUNIOR FAMILY

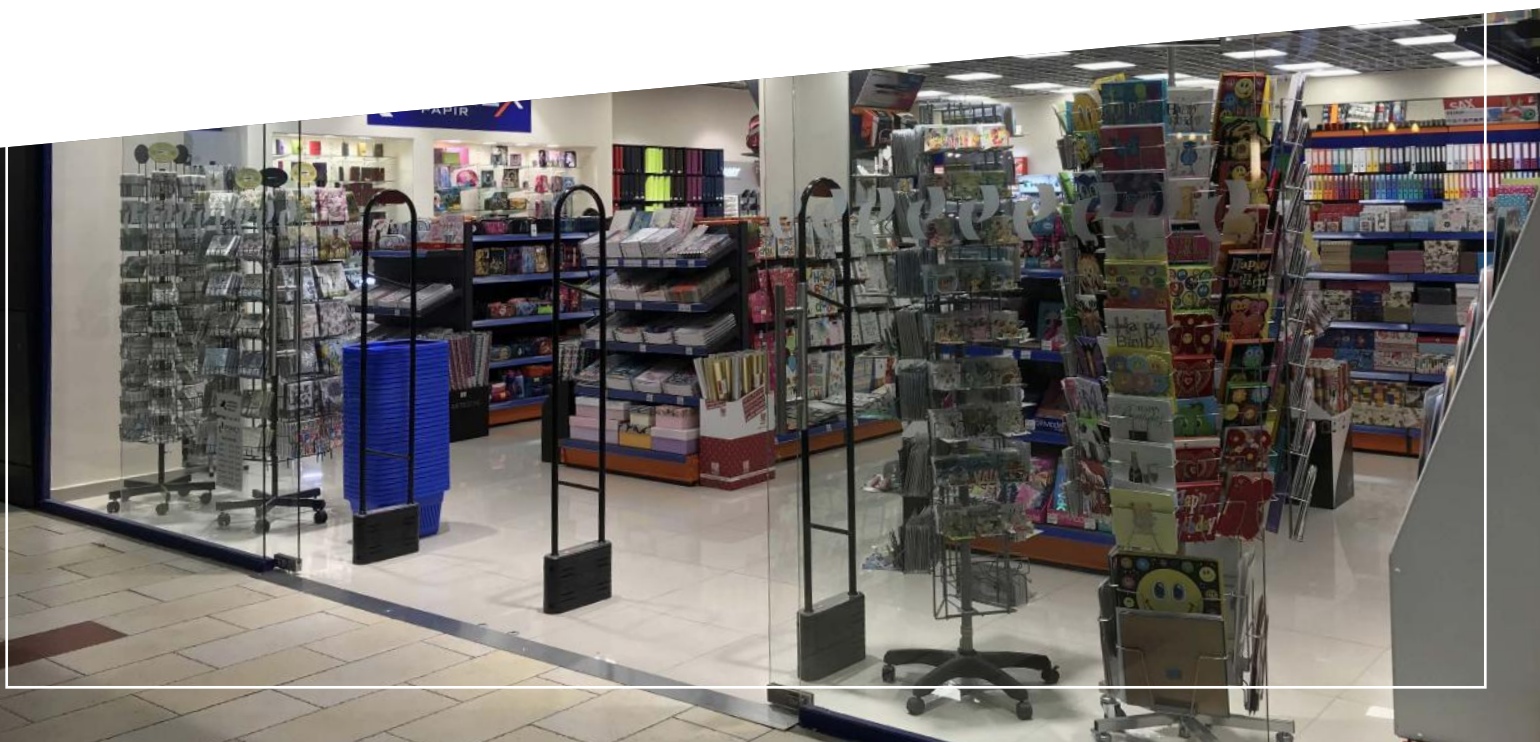
JUNIOR IS ONE OF THE MOST SUCCESSFUL ANTENNA OF SHOPGUARD THANKS TO ITS RELIABILITY AND VERSATILITY. PRICEWISE IT IS SIMPLY UNBEATABLE. AVAILABLE IN TX-RX AND TRX VERSIONS.

All the major tags and accessories are compatible with the product:

- hard tags
- ink tags
- soft tags, paper labels
- safers
- detaching and deactivator products
- spider wraps

BENEFITS

- fits to any entrance and cashier size
- durable body (steel tube)
- simple and clean “see-through” design
- audible and visible alarm and feedback
- floor antenna can be controlled by it



Junior RF AFT-TRX

P0200011

General Info

Family	Junior
Size	Normal
Type	TRx mono system

Recommendation 4x4 paper label

	metric	imperial
Norm/Max Distance*	1,6/2m	62/78in
Norm/Max On side*	0,8/1m	31/39in

Recommendation round hardtag

	metric	imperial
Norm/Max Distance*	2,2/2,6m	86/102in
Norm/Max On side*	1,1/1,3m	43/51in

Dimension

Height	1,622m	64in
Width	0,355m	14in
Depth (thickness)	0,083m	3.3in
Approx. weight	7,5kg	16.5lbs

Electrical Requirements

PSU	18V AC	
Power Consumption	7W	
Operating Temp.	0 - 40 °C	32 - 104 °F

Other

Antenna Safety	CB, UL/cUL
Emissions Safety	FCC/IC, CE
Materials Used	Steel body, plastic housing

*detection distance may vary, depends on **environment** and **tag type**.



RMS
by shopguard

Tx/Rx duo

TRx Alternating Field

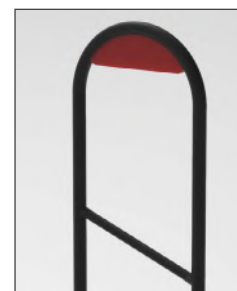
Available colours



silver



anthracite



black

