

DH-XVR5104HS-I3

4 Channels Penta-brid 5M-N/1080P Compact 1U 1HDD WizSense Digital Video Recorder



WizSense

Launched by Dahua Technology, WizSense is a series of AI products and solutions that adopt independent AI chip and deep learning algorithm. It focuses on human and vehicle with high accuracy, enabling users to fast act on defined targets. Based on Dahua's advanced technologies, WizSense provides intelligent, simple and inclusive products and solutions.

Series Overview

Dahua Technology, a world-leading video-centric smart IoT solution and service provider, debuted its new XVR series, XVR5000-I3 Series featuring max.full-channel SMD Plus to benefit customers from AI upgrade (The number of channels differs depending on the model. Please refer to the specifications below for information on the number of channels.). This series has been developed to reduce false-alarm rates and the cost of human surveillance, thus bringing great value to customers in search of products with accurate human/vehicle alarm to raise the security level of various indoor and outdoor facilities.

Functions

Face Recognition

Dahua Face Recognition technology extracts the features of captured faces and compares them with that in face database to recognize the person identity.

*Face Recognition takes effect when Face is selected in AI Mode.

SMD Plus

With intelligent algorithm, Dahua Smart Motion Detection technology can categorize the targets that trigger motion detection and filter the motion detection alarm triggered by non-concerned targets to realize effective and accurate alarm.

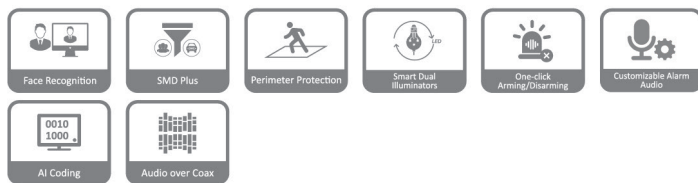
*SMD Plus takes effect when SMD or IVS&SMD is selected in AI Mode.

Perimeter Protection

Automatically filters out false alarms caused by animals, rustling leaves, bright lights, etc. Enables system to act secondary recognition for the targets. Improves alarm accuracy.

*Perimeter Protection takes effect when IVS&SMD is selected in AI Mode.

- H.265+/H.265 dual-stream video compression
- Supports Full-channel AI-Coding
- Supports HDCVI/AHD/TVI/CVBS/IP video inputs
- Max 6 channels IP camera inputs, each channel up to 6MP; Max 32 Mbps incoming bandwidth
- Up to 2 channels video stream (analog channel) Perimeter Protection
- Up to 4 channels video stream (analog channel) SMD Plus
- Up to 1 channels video stream (analog channel) human face recognition
- IoT & POS functionalities



Smart Dual Illuminators

With Smart Dual Illuminators technology, you can select Smart Illumination Mode for the system to automatically switch between IR mode and white light mode. It allows white light to be turned on when a target is detected by the SMD Plus/Perimeter Protection function of AI-enabled XVR. This significantly reduces light pollution at night. Together with other modes, including IR Mode and White Light Mode, the smart dual illumination technology can meet the requirements of a wide variety of scenes.

One-click Arming/Disarming

With just one click, you can enable or disable alarm linkages to show messages, send emails, output audio alarms and more, through the mobile app and platform.

Customizable Alarm Audio

Designed for your convenience, the TIOC alarm can be customized to meet your needs. It is flexible, allowing you to directly upload your customized audio through the mobile app and XVR.

AI Coding

Compared with H.265/H.264, AI coding can reduce more than 50% bit rate and storage requirements without loss of decoding compatibility, providing clear human and vehicle details.

Audio over Coax

The integrated design can reduce wiring troubles which makes it much more cost-effective and convenient for installation.

Technical Specification

System

Main Processor	Industrial-grade processor
Operating System	Embedded Linux
Operating Interface	Web; Local GUI

Perimeter Protection

Perimeter Performance AI by Recorder (Number of Channels)	Advanced Model : 1 channel, 10 IVS for each channel General Model : 2 channels, 10 IVS for each channel
---	--

Face Detection

Face Attributes	Gender; age group; glasses; expressions; face mask; beard
Face Detection Performance of AI by Recorder (Number of Channels)	1 channel, (up to 8 face images/s)

Face Recognition

Face Database Capacity	Up to 10 face databases and 10,000 images.
Face Recognition Performance of AI by Recorder (Number of Channels)	1 channel

SMD Plus

SMD Plus by Recorder	4-channel: Secondary filtering for human and motor vehicle , reducing false alarms caused by leaves, rain and lighting condition change
----------------------	---

Audio and Video

Analog Camera Input	4 channels, BNC: adaptive access by default; HDCVI, AHD, TVI and CVBS access can be configured.
Camera Input	1. CVI: 5 MP, 4 MP, 1080p@25/30 fps, 720p@50/60 fps, 720p@25/30 fps. 2. TVI: 5 MP, 4 MP, 1080p@25/30 fps, 720p@25/30 fps. 3. AHD: 5 MP, 4 MP, 1080p@25/30 fps, 720p@25/30 fps. 4. CVBS: PAL/NTSC
IP Camera Input	Up to 6 channels of IPC access 2 IP channels by default + 4 channels (analog channels are converted to IP channels) incoming bandwidth: 32 Mbps, recording bandwidth: 32 Mbps *After IP channels are added beyond the existing channels, the AI Function (IVS, SMD, FACE) will be disabled.
Encoding Capacity	Main stream: All channel 5M-N (1 fps~10 fps); 4M-N/1080p (1 fps~15 fps); 1080N/720p/960H/ D1/CIF (1 fps~25/30 fps) Sub stream: D1/CIF (1 fps~15fps)
Dual-stream	Yes
Video Bit Rate	32 kbps~6144 kbps
Audio Sampling	8 kHz, 16 bit
Audio Bit Rate	64 kbps
Video Output	1 HDMI, 1 VGA HDMI/VGA: 1920 × 1080, 1280 × 1024, 1280 × 720
Multi-screen Display	When IP extension mode not enabled: 1/4 When IP extension mode enabled: 1/4/6
Third-party Camera Access	ONVIF; RTSP; Panasonic; Sony; Axis; Arecont; Pelco; Canon; Samsung

Compression Standard

Video Compression	AI Coding; H.265+; H.265; H.264+; H.264
Audio Compression	G.711a; G.711u; PCM

Network

Network Protocol	HTTP; HTTPS; TCP/IP; IPv4; RTSP; UDP; SMTP; NTP; DHCP; DNS; DDNS; P2P
Mobile Phone Access	iOS; Android
Interoperability	ONVIF 21.06; CGI Conformant
Browser	Chrome IE9 or later Firefox
Network Mode	Single-address mode

Recording Playback

Record Mode	General, motion detection; intelligent; alarm; POS
Recording Playback	1/4
Backup Method	USB device and network
Playback Mode	Instant playback, general playback, event playback, tag playback, smart playback (face and motion detection)

Alarm

General Alarm	Motion detection, video loss, tampering
Anomaly Alarm	No disk, disk error, low space, offline, ip conflict, MAC conflict
Intelligent Alarm	Face detection, face recognition, perimeter protection
Alarm Linkage	Record, snapshot (panoramic), IPC external alarm output, access controller, voice prompt, buzzer, log, preset, email

Ports

Audio Input	1-channel RCA 4-channel BNC (Coaxial Audio)
Audio Output	1-channel RCA
Two-way Talk	Yes (share the same audio input with the first channel)
HDD Interface	1 SATA port, up to 16 TB. The maximum HDD capacity varies with environment temperature.
RS-485	1 port, for PTZ control
USB	2 USB ports (USB 2.0)
HDMI	1
VGA	1
Network Port	1 (10/100 Mbps Ethernet port, RJ-45)

General

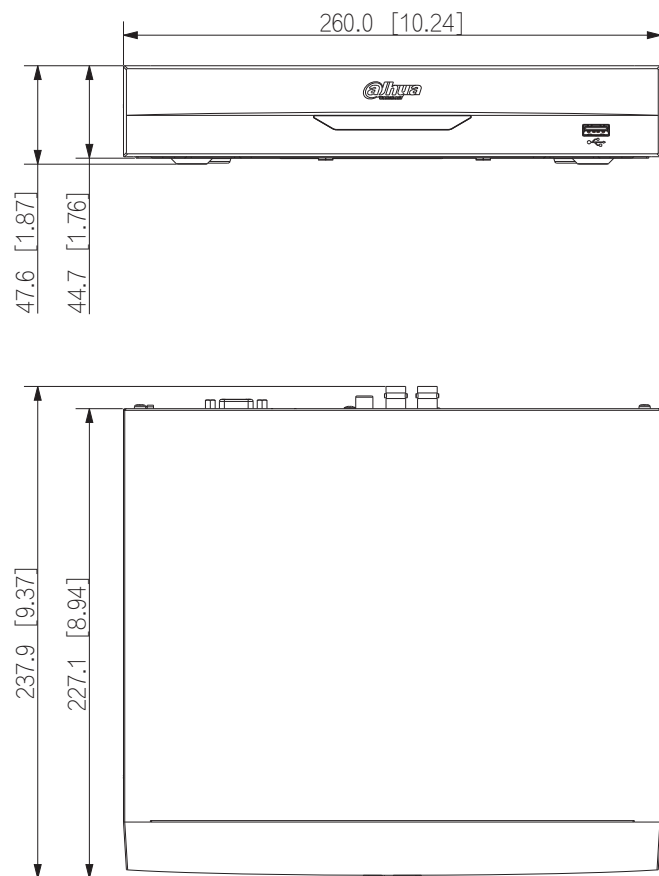
Power Supply	12 VDC, 1.5 A
Power Consumption	<4 W
Net Weight	1.0 kg (2.20 lb)
Gross Weight	1.4 kg (3.08 lb)
Product Dimensions	260.0 mm × 237.9 mm × 47.6 mm (10.24" × 9.37" × 1.87") (W × D × H)

Packaging Dimensions	333.0 mm × 315.0 mm × 89.0 mm (13.11" × 12.40 × 3.50") (W× D × H)
Operating Temperature	−10 °C to +55 °C (+14 °F to +131 °F)
Operating Humidity	0%–90% (RH)
Installation	Desktop
Certifications	FCC: Part 15 Subpart B CE: CE-LVD: EN 60950-1/IEC 60950-1 CE-EMC: EN 61000-3-2; EN 61000-3-3; EN 55032; EN50130; EN 55024

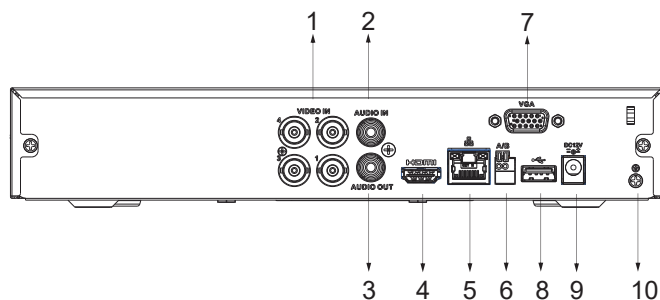
Ordering Information

Type	Model	Description
4 Channels WizSense XVR	DH-XVR5104HS-I3	Compact 1U WizSense Digital Video Recorder

Dimensions (mm[inch])



Panels



- | | |
|----------------------------|---------------------------|
| 1 VIDEO IN | 2 AUDIO IN, RCA Connector |
| 3 AUDIO OUT, RCA Connector | 4 HDMI Port |
| 5 Network Port | 6 RS-485 Port |
| 7 VGA Port | 8 USB Port |
| 9 Power Input | 10 Ground |

DH-HAC-HFW1200TLM-IL-A

2MP Smart Dual Light HDCVI Fixed-focal Bullet Camera



System Overview

The Lite Series is a great choice for consumers looking for high quality monitoring products at a reasonable price. Its low cost and high performance make it ideal for residential areas and SMB solutions. This series is equipped with a wide range of technologies, such as full-color and starlight, providing various solutions for different scenarios.

Functions

Smart Dual Light

With its smart dual light mechanism, the camera automatically turns on the white light when Perimeter Protection/SMD Plus function of AI XVR detects a target in the rule area to capture clear, vivid images. When the target leaves the rule area, the camera automatically switches over from the white light to the IR light to significantly reduce light pollution.

Broadcast-quality Audio

Audio signal transmission over coaxial cables is supported by the HDCVI camera. It adopts a unique audio processing and transmission technology that restores source audio and eliminates noise, ensuring the quality and reliability of the audio information that is collected. This becomes important for video surveillance applications that use audio information as a type of supplementary evidence.

Super Adapt

With its intelligent algorithm, the camera automatically adjusts its parameters to provide optimal performance and vivid images.

Advanced 3DNR

Dahua's advanced 3DNR technology reduces image noise with little to no impact on image sharpness, especially in poor lighting conditions. It detects the noise, and compares the sequential frames to effectively reduce the noise. It also makes efficient use of bandwidth, saving on storage space.

* The parameters and datasheets below can only be applied to 1200-S6-IL series.

* In order to use the Smart Dual Light HDCVI camera, the firmware of XVR must be upgraded to V4.001.0000004.1.R.220323 or later version.

- Max. 30 fps@1080p.
- 3D NR.
- Smart Dual Light.
- 40 m illumination distance.
- Super Adapt.
- Built-in mic.
- 3.6 mm fixed lens (2.8 mm optional).
- CVI/CVBS/AHD/TVI switchable.
- IP67, 12 V DC.



Protection (IP67, Wide Voltage)

IP67: The camera passed a series of rigorous dust and immersion tests. Its enclosure is both dust-proof and waterproof, and can function normally while being immersed in 1 m deep water for up to 30 minutes. Wide voltage: The camera has $\pm 30\%$ input voltage tolerance (for some power supplies) and a wide voltage range, making it suitable for a variety of outdoor scenarios.

4 Signals over 1 Coaxial Cable

HDCVI technology supports 4 signals (video, audio*, data and power) which are simultaneously transmitted over a coaxial cable. Dual-way data transmission allows the HDCVI camera to interact with the XVR to perform various actions such as sending control signals and triggering alarms. HDCVI technology also supports PoC, which makes the camera easy and quick to install.

* Audio input is available for select HDCVI camera models.

Long Distance Transmission

HDCVI technology provides long distance transmission in real time without transmission loss. It supports transmission distances up to 700 m for 2-MP/5-MP/8-MP HD videos through coaxial cables, and up to 300 m through UTP cables. The results were obtained and verified through rigorous testing in Dahua's test laboratory.

Technical Specification						
Camera						
Image Sensor		2 MP CMOS				
Max. Resolution		1920 (H) × 1080 (V)				
Scanning System		Progressive				
Electronic Shutter Speed		PAL: 1/25 s–1/100000 s NTSC: 1/30 s–1/100000 s				
Min. Illumination		0.01 lux@F2.0 (Color, 30 IRE) 0.001 lux@F2.0 (B/W, 30 IRE) 0 lux (Illuminator on)				
S/N Ratio		>65 dB				
Illumination Distance		IR: 40 m (131.23 ft) Warm light: 40 m (131.23 ft)				
Illuminator On/Off Control		Auto				
Illuminator Number		2 (Warm light);2 (IR light)				
Angle Adjustment		Pan: 0°–360° Tilt: 0°–90° Rotation: 0°–360°				
Lens						
Lens Type		Fixed-focal				
Auto Focus		No				
Lens Mount		M12				
Focal Length		2.8 mm;3.6 mm				
Max. Aperture		F2.0				
Field of View		2.8 mm: H: 102°; V: 60°; D: 129° 3.6 mm: H: 83°; V: 48°; D: 105°				
Iris Control		Fixed				
Close Focus Distance		2.8 mm: 0.5 m (1.64 ft) 3.6 mm: 0.7 m (2.30 ft)				
DORI Distance	Lens	Detect	Observe	Recognize	Identify	
	2.8 mm	41.1 m (135.83 ft)	16.5 m (42.13 ft)	8.3 m (27.23 ft)	4.1 m (13.45 ft)	
	3.6 mm	50.9 m (166.99 ft)	20.3 m (66.60 ft)	10.2 m (33.46 ft)	5.1 m (16.73 ft)	
Video						
Video Frame Rate		CVI: PAL: 1080p@25 fps; NTSC: 1080p@30 fps; AHD: PAL: 1080p@25 fps; NTSC: 1080p@30 fps; TVI: PAL: 1080p@25 fps; NTSC: 1080p@30 fps; CVBS: PAL: 960H; NTSC: 960H				
Resolution		1080p (1920 × 1080); 960H (960 × 576/960 × 480)				
Day/Night		Auto(ICR)/Color/B/W				
BLC		BLC; HLC; DWDR				
WDR		DWDR				

White Balance	Auto;Area white balance
Gain Control	Auto
Noise Reduction	3D NR
Illumination Mode	Smart IR&WL; WL Mode; IR Mode
Mirror	Yes
Privacy Masking	Off/On (8 areas, rectangle)
Certification	
Certifications	CE-LVD: EN 62368-1; CE-EMC: EN 55032; EN 55035; FCC: 47 CFR FCC Part 15, Subpart B; UL: UL62368-1 + CAN/CSA C22.2 No. 62368-1-14
Port	
Video Output	Video output choices of CVI/TVI/AHD/CVBS by one BNC port
Audio Input	1 channel
Power	
Power Supply	12 VDC ± 30%
Power Consumption	Max 4.1W (12 VDC, IR on)
Environment	
Operating Temperature	−40 °C to +60 °C (−40 °F to +140 °F)
Operating Humidity	<95% (RH), non-condensing
Storage Temperature	−40 °C to +60 °C (−40 °F to +140 °F)
Storage Humidity	<95% (RH), non-condensing
Protection	IP67
Structure	
Casing Material	Metal front cover + plastic rear barrel + metal bracket
Product Dimensions	198.4 mm × 80.2 mm × 76.2 mm (7.81" × 3.16" × 3")
Net Weight	0.29 kg (0.64 lb)
Gross Weight	0.41 kg (0.90 lb)
Installation	Wall mount; ceiling mount; vertical pole mount

Ordering Information		
Type	Model	Description
2MP Camera	DH-HAC-HFW1200TLMP-IL-A	2MP HDCVI Smart Dual Light Bullet Camera, PAL
	DH-HAC-HFW1200TLMN-IL-A	2MP HDCVI Smart Dual Light Bullet Camera, NTSC
Accessories (Optional)	PFA130-E	Water-proof Junction Box
	PFA134	Junction Box
	PFA152-E	Pole Mount Bracket
	PFM800-E	Passive HDCVI Balun
	FM321D	12V 1A Power Adapter
	PFM904	Integrated Mount Tester

Accessories

Optional:



PFA130-E
Water-proof
Junction Box



PFA134
Junction
Box



PFA152-E
Pole Mount
Bracket



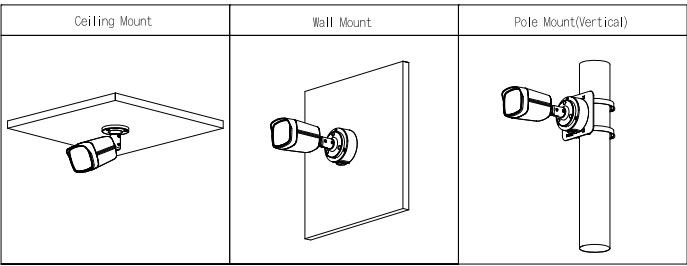
PFM800-E
Passive HDCVI Balun



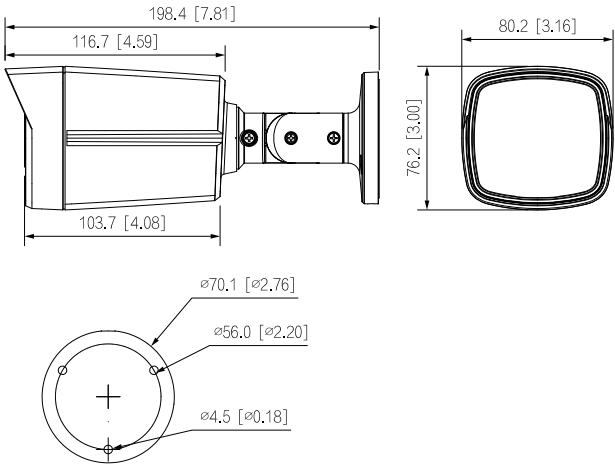
PFM321D
12V 1A Power
Adapter



PFM904
Integrated Mount
Tester



Dimensions (mm [inch])



DH-HAC-HDW1200TLMQ(-A)

2MP HDCVI Quick-to-install IR Eyeball Camera



- Max 30fps@1080P
- Quick-to-install eyeball saves installation time
- CVI/CVBS/AHD/TVI switchable
- 3.6mm fixed lens (2.8mm optional)
- Built-in mic(-A)
- Max. IR length 30m, Smart IR
- IP67, DC12V



System Overview

Experience 1080P full HD video and the simplicity of using existing cabling infrastructure with HDCVI. The Lite series 1080P HDCVI camera features a compact design and offers a high quality image at a friendly price. It offers various motorized/fixed lens models with a multi-language OSD and HD/SD switchable output. Its structural flexibility and high cost-performance makes the camera an ideal choice for SMB solutions.

Functions

4 Signals over 1 Coaxial Cable

HDCVI technology supports 4 signals to be transmitted over 1 coaxial cable simultaneously, i.e. video, audio*, data and power. Dual-way data transmission allows the HDCVI camera to interact with the XVR, such as sending control signal or triggering alarm. Moreover, HDCVI technology supports PoC for construction flexibility.

* Audio input is available for some models of HDCVI cameras.

Easy Installation

HDCVI Quick-to-install eyeball adopts quick-to-install pedestal, which can achieve easier installation than conventional eyeball. Quick-to-install camera reduces time and labor costs.

Long Distance Transmission

HDCVI technology guarantees real-time transmission at long distance without any loss. It supports up to 800m(1080p)/1200m(720P) transmission via coaxial cable, and up to 300m(1080P)/450m(720P) via UTP cable.*

*Actual results verified by real-scene testing in Dahua's test laboratory.

Simplicity

HDCVI technology inherits the born feature of simplicity from traditional analog surveillance system, making itself a best choice for investment protection. HDCVI system can seamlessly upgrade the traditional analog system without replacing existing coaxial cabling. The plug and play approach enables full HD video surveillance without the hassle of configuring a network.

Smart IR

The camera is designed with IR LED illumination for best lowlight performance. Smart IR is a technology to ensure brightness uniformity in B/W image under low illumination. Dahua's unique Smart IR adjusts to the intensity of camera's infrared LEDs to compensate for the distance of an object, and prevents IR LEDs from overexposing images as the object come closer to the camera.

Multi-formats

The camera supports multiple video formats including HDCVI, CVBS and other two common HD analog formats in the market. The four formats can be switched over through OSD menu or by PFM820(UTC controller). This feature makes the camera to be compatible with most end users' existing HD/SD DVRs.

Multi-language OSD

OSD menu provides multiple image adjustments and function settings to meet the requirements of different monitoring scenes. The OSD menu includes configurations such as backlight mode, day/night, white balance, privacy mask and motion detect. The camera supports 11 languages for OSD menu, namely, Chinese, English, French, German, Spanish, Portuguese, Italian, Japanese, Korean, Russian and Polish.

Protection

The camera's outstanding reliability is unsurpassed due to its rugged design. The camera is protected against water and dust with IP67 ranking, making it suitable for indoor or outdoor environments. With working temperature range of -40 °C to +60 °C (-40 °F to +140 °F), the camera is designed for extreme temperature environments. Supporting $\pm 30\%$ input voltage tolerance, this camera suits even the most unstable power supply conditions. Its 4KV lightning rating provides protection against the camera and its structure from the effects of lightning.

Technical Specification							Gain Control		Auto; manual
Camera							Noise Reduction		2D NR
Image Sensor		1/2.7 inch CMOS					Smart IR		Yes
Max. Resolution		1920(H)×1080(V)					Electronic Defog		Yes
Pixel		2MP					Mirror		Off/On
Scanning System		Progressive					Privacy Masking		Off/On (8 area, rectangle)
Electronic Shutter Speed		PAL: 1/25s–1/100000s NTSC: 1/30s–1/100000s					Certifications		
S/N Ratio		>65dB					Certifications		
Min. Illumination		0.02Lux/F1.9, 30IRE, 0Lux IR on					CE (EN55032:2015, EN 61000-3-2:2014, EN 61000-3-3:2013, EN55024:2010+A1:2015, EN 55035:2017, EN50130-4:2011+A1:2014) FCC (CFR 47 FCC Part 15 subpartB, ANSI C63.4-2014) UL (UL60950-1+CAN/CSA C22.2 No.60950-1)		
Illumination Distance		30 m (98.4 ft)					Port		
Illuminator On/Off Control		Auto; manual					Audio Output		
Illuminator Number		1					Video Output		
Pan/Tilt/Rotation Range		Pan: 0°–360° Tilt: 0°–78° Rotation: 0°–360°					Power		
Lens							Power Supply		
Lens Type		Fixed-focal					12V ±30% DC		
Mount Type		M12					Power Consumption		
Focal Length		2.8 mm; 3.6 mm					Max 2.9W (12V DC, IR on)		
Max. Aperture		F1.9					Environment		
Field of View		2.8 mm: 119° x 101° x 54° (diagonal x horizontal x vertical) 3.6 mm: 100° x 84° x 45° (diagonal x horizontal x vertical)					Operating Temperature		
Iris Type		Fixed iris					Storage Temperature		
Close Focus Distance		2.8 mm: 0.5 m (1.7 ft) 3.6 mm: 0.8 m (2.6 ft)					Protection Grade		
DORI Distance	Lens	Detect	Observe	Recognize	Identify	IP67			
	2.8 mm	38.6 m (126.6 ft)	15.4 m (50.5 ft)	7.7 m (25.3 ft)	3.9 m (12.8 ft)	Structure			
	3.6 mm	49.7 m (163.1 ft)	19.9 m (65.3 ft)	9.9 m (32.5 ft)	5 m (16.4 ft)	Casing			
Video							Camera Dimensions		
Frame Rate		CVI: 1080P@25/30fps; 720P@25/30fps; 720P@50/60fps; AHD: 1080P@25/30fps; 720P@25/30fps; TVI: 1080P@25/30fps; 720P@25/30fps; 720P@50/60fps; CVBS: 960H					Net Weight		
Resolution		1080P (1920×1080); 720P (1280×720); 960H (960×576/960×480)					Gross Weight		
Day/Night		Auto switch by ICR					Metal dome+metal cover+plastic decorative ring		
BLC		BLC/HLC/DWDR					φ109.9 mm × 88.1 mm (φ4.33" × 3.47")		
WDR		DWDR					0.33 Kg (0.73 lb)		
White Balance		Auto; manual					0.44 Kg (0.97 lb)		

Ordering Information

Type	Part Number	Description
2MP Camera	DH-HAC-HDW1200TLMQP-A 2.8mm	2MP HDCVI IR Eyeball Camera
	DH-HAC-HDW1200TLMQN-A 2.8mm	
	DH-HAC-HDW1200TLMQP 2.8mm	
	DH-HAC-HDW1200TLMQN 2.8mm	
	DH-HAC-HDW1200TLMQP-A 3.6mm	
	DH-HAC-HDW1200TLMQN-A 3.6mm	
	DH-HAC-HDW1200TLMQP 3.6mm	
	DH-HAC-HDW1200TLMQN 3.6mm	
Accessories	PFA13G	Junction Box
	PFB205W	Wall Mount Bracket (For use alone or with PFA152-E)
	PFA152-E	Pole Mount Bracket (For use with PFB205W)
	PFA130-E	IP66 Junction Box
	PFM800-E	Passive HDCVI Balun
	PFM321D	12V 1A Power Adapter
	PFM820	UTC Controller
	PFM904	Integrated Mount Tester

Accessories

Optional:



PFA13G
Junction Box



PFB205W
Wall Mount Bracket
(For use alone or with
PFA152-E)



PFA152-E
Pole Mount Bracket
(For use with PFB204W)



PFA130-E
IP66 Junction Box



PFM800-E
Passive HDCVI Balun



PFM321D
12V 1A Power Adapter



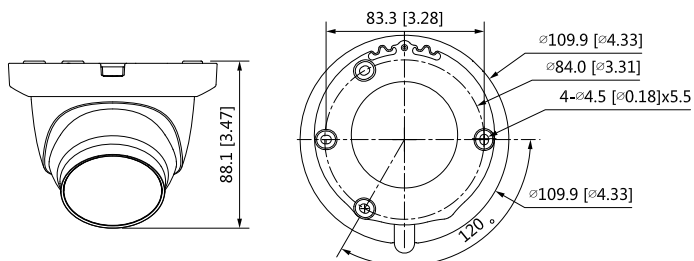
PFM820
UTC Controller



PFM904
Integrated Mount Tester

Junction Mount	Wall Mount	Ceiling Mount
Pole Mount(Vertical)		

Dimensions (mm[inch])





WD Purple™

Surveillance Hard Drives

WD Purple™ drives are built for 24/7, always-on, high-definition security systems. With a supported workload rate* of up to 180 TB/yr and support for up to 64 cameras, WD Purple™ drives are optimized for surveillance systems. WD Purple™ surveillance storage also comes with WD's exclusive AllFrame 4K™ technology, so you can confidently create a security system tailored to the needs of your business. Using AllFrame 4K™ technology, WD Purple™ drives improve ATA streaming to help reduce errors, pixelation, and video interruptions that could happen in a video recorder system.



INTERFACE

SATA 6 Gb/s

FORM FACTOR

3.5-inch

PERFORMANCE CLASS

5400 RPM Class

CAPACITIES

500GB to 10TB

MODEL NUMBERS

WD100PURZ	WD30PURX
WD800PURZ	WD20PURX
WD60PURX	WD10PURX
WD50PURX	WD05PURX
WD40PURX	

Product Features

The right drive for the right job

WD Purple™ drives have been engineered specifically for surveillance, so they're able to withstand the extreme heat fluctuations and equipment vibrations within a NVR environment. An average desktop drive is built to run for only short intervals, not the harsh 24/7 always-on environment of a high-definition surveillance system. A disruption to a drive could result in a failure that impacts multiple users, your security archive, or even the entire system. With WD Purple™, you get reliable, surveillance-class storage that's tested for compatibility in a wide-range of security systems.

Industry-leading storage. Surveillance you can trust.

WD is a worldwide leader in the hard drive industry. With WD Purple™ surveillance storage, you have a drive engineered for high temperature, always-on surveillance systems so you can rely on quality video playback when you need it most. Whether you're protecting loved ones or monitoring your business, WD Purple™ offers performance you can trust.

Wide compatibility. Seamless integration.

WD Purple™ hard drives are built with compatibility in mind, so you can quickly and seamlessly add capacity to your surveillance system. With a wide range of industry-leading enclosures and chipsets supported, you're sure to find the DVR configuration that's right for you.**

**Not sure what drive is best for your system? Use our compatibility tool to find the perfect storage for your DVR or NVR.

Expand your view to 64

Each WD Purple™ drive is optimized to support up to 64 cameras. With so many options, you have the flexibility to upgrade or expand your security system in the future.

Trust your view with AllFrame 4K™

Missed frames and lost footage could be a serious problem when video surveillance needs to be retrieved. All WD Purple™ drives are equipped with AllFrame 4K™ technology, which improves ATA streaming to help reduce frame loss, improve overall

video playback, and increase the number of hard drive bays supported within a NVR.

Features:

- Engineered specifically for surveillance security systems.
- Three times the workload rating of our desktop hard drives*.
- Tuned for write-intensive, low bit-rate, high stream-count applications typical to most surveillance applications.
- Prioritized write-operations for maximized surveillance performance.
- TLER & ATA streaming support.
- Support for more than eight bays.***

*Workload Rate is defined as the amount of user data transferred to or from the hard drive. Workload Rate is annualized (TB transferred X(8760 / recorded power-on hours)). Workload Rate will vary depending on your hardware and software components and configurations.

***For capacities 4TB and higher.

Less power. More efficient.

Low power consumption is a necessity in a high-temperature, always-on surveillance environment. With our exclusive IntelliSeek™ technology, WD Purple™ drives are able to calculate optimum seek speeds. This keeps power consumption low so ambient noise and vibrations are at a minimum.

Three year limited-warranty

As an industry-leading hard drive manufacturer, WD stands behind their surveillance storage solutions. With a 3-year limited warranty included with every WD Purple™ drive, you can rely on your surveillance system's data storage capabilities.

The WD Advantage

At WD, we put our products through extensive Functional Integrity Testing (F.I.T.™) prior to any product launch. This testing ensures our products consistently meet the high quality and reliability standards of the WD brand. WD also has a detailed Knowledge Base with more than 1,000 helpful articles as well as helpful software and utilities. Our customer support lines have long operational hours to ensure you get the help you need when you need it. Our toll-free customer support lines are here to help or you can access our WD Support site for additional details.



Specifications	10TB	8TB	6TB	5TB	4TB	3TB	2TB
Model number ¹	WD100PURZ	WD80PUZX	WD60PURX	WD50PURX	WD40PURX	WD30PURX	WD20PURX
Formatted capacity ²	10TB	8TB	6TB	5TB	4TB	3TB	2TB
Form factor	3.5-inch	3.5-inch	3.5-inch	3.5-inch	3.5-inch	3.5-inch	3.5-inch
Advanced Format (AF)	Yes	Yes	Yes	Yes	Yes	Yes	Yes
RoHS compliant ³	Yes	Yes	Yes	Yes	Yes	Yes	Yes
Performance							
Interface transfer rate (max) ² Buffer to host Host to/from drive (sustained)	6 Gb/s 210 MB/s	6 Gb/s 178 MB/s	6 Gb/s 175 MB/s	6 Gb/s 170 MB/s	6 Gb/s 150 MB/s	6 Gb/s 145 MB/s	6 Gb/s 145 MB/s
Cache (MB) ²	256	128	64	64	64	64	64
Performance Class	5400 RPM Class	5400 RPM Class	5400 RPM Class	5400 RPM Class	5400 RPM Class	5400 RPM Class	5400 RPM Class
Reliability/Data Integrity							
Load/unload cycles ⁴	300,000	300,000	300,000	300,000	300,000	300,000	300,000
Non-recoverable read errors per bits read	<1 in 10 ¹⁴	<1 in 10 ¹⁴	<1 in 10 ¹⁴	<1 in 10 ¹⁴	<1 in 10 ¹⁴	<1 in 10 ¹⁴	<1 in 10 ¹⁴
Limited warranty (years) ⁵	3	3	3	3	3	3	3
Power Management							
Average power requirements (W) Read/Write Idle Standby and Sleep	6.2 5.0 0.5	6.4 5.7 0.7	5.3 4.9 0.4	5.3 4.9 0.4	5.1 4.5 0.4	4.4 4.1 0.4	4.4 4.1 0.4
Environmental Specifications⁶							
Temperature (°C, on the base casting) Operating Non-operating	0 to 65 -40 to 70	0 to 65 -40 to 70	0 to 65 -40 to 70	0 to 65 -40 to 70	0 to 65 -40 to 70	0 to 65 -40 to 70	0 to 65 -40 to 70
Shock (Gs) Operating (2 ms, read/write) Operating (2 ms, read) Non-operating (2 ms)	30 65 250	30 65 250	30 65 250	30 65 250	30 65 250	30 65 250	30 65 250
Acoustics (dBA) ⁷ Idle Seek (average)	20 29	20 29	25 26	25 26	25 26	23 24	23 24
Physical Dimensions							
Height (in./mm, max)	1.028/26.1	1.028/26.1	1.028/26.1	1.028/26.1	1.028/26.1	1.028/26.1	1.028/26.1
Length (in./mm, max)	5.787/147	5.787/147	5.787/147	5.787/147	5.787/147	5.787/147	5.787/147
Width (in./mm, ± .01 in.)	4/101.6	4/101.6	4/101.6	4/101.6	4/101.6	4/101.6	4/101.6
Weight (lb/kg, ± 10%)	1.43/0.65	1.43/0.65	1.65/0.75	1.65/0.75	1.50/0.68	1.40/0.64	1.40/0.64

¹ Not all products may be available in all regions of the world.

² As used for storage capacity, one megabyte (MB) = one million bytes, one gigabyte (GB) = one billion bytes, and one terabyte (TB) = one trillion bytes. Total accessible capacity varies depending on operating environment. As used for buffer or cache, one megabyte (MB) = 1,048,576 bytes. As used for transfer rate or interface, megabyte per second (MB/s) = one million bytes per second, and gigabit per second (Gb/s) = one billion bits per second. Effective maximum SATA 6 Gb/s transfer rate calculated according to the Serial ATA specification published by the SATA-IO organization as of the date of this specification sheet. Visit www.sata-io.org for details.

³ WD hard drive products manufactured and sold worldwide after June 8, 2011, meet or exceed Restriction of Hazardous Substances (RoHS) compliance requirements as mandated by the RoHS Directive 2011/65/EU.

⁴ Controlled unload at ambient condition.

⁵ See <http://support.wd.com/warranty> for regional specific warranty details.

⁶ No non-recoverable errors during operating tests or after non-operating tests.

⁷ Sound power level.



WD Purple™

Specifications	1TB	500GB
Model number ¹	WD10PURX	WD05PURX
Formatted capacity ²	1TB	500GB
Form factor	3.5-inch	3.5-inch
Advanced Format (AF)	Yes	Yes
RoHS compliant ³	Yes	Yes
Performance		
Interface transfer rate (max) ²		
Buffer to host	6 Gb/s	6 Gb/s
Host to/from drive (sustained)	110 MB/s	110 MB/s
Cache (MB) ²	64	64
Performance Class	5400 RPM Class	5400 RPM Class
Reliability/Data Integrity		
Load/unload cycles ⁴	300,000	300,000
Non-recoverable read errors per bits read	<1 in 10 ¹⁴	<1 in 10 ¹⁴
Limited warranty (years) ⁵	3	3
Power Management		
Average power requirements (W)		
Read/Write	3.3	3.3
Idle	2.9	2.9
Standby and Sleep	0.4	0.4
Environmental Specifications⁶		
Temperature (°C, on the base casting)		
Operating	0 to 65	0 to 65
Non-operating	-40 to 70	-40 to 70
Shock (Gs)		
Operating (2 ms, read/write)	30	30
Operating (2 ms, read)	65	65
Non-operating (2 ms)	350	350
Acoustics (dBA) ⁷		
Idle	21	21
Seek (average)	22	22
Physical Dimensions		
Height (in./mm, max)	1.028/26.1	1.028/26.1
Length (in./mm, max)	5.787/147	5.787/147
Width (in./mm, ± .01 in.)	4/101.6	4/101.6
Weight (lb/kg, ± 10%)	0.99/0.45	0.99/0.45

¹ Not all products may be available in all regions of the world.

² As used for storage capacity, one megabyte (MB) = one million bytes, one gigabyte (GB) = one billion bytes, and one terabyte (TB) = one trillion bytes. Total accessible capacity varies depending on operating environment. As used for buffer or cache, one megabyte (MB) = 1,048,576 bytes. As used for transfer rate or interface, megabyte per second (MB/s) = one million bytes per second, and gigabit per second (Gb/s) = one billion bits per second. Effective maximum SATA 6 Gb/s transfer rate calculated according to the Serial ATA specification published by the SATA-IO organization as of the date of this specification sheet. Visit www.sata-io.org for details.

³ WD hard drive products manufactured and sold worldwide after June 8, 2011, meet or exceed Restriction of Hazardous Substances (RoHS) compliance requirements as mandated by the RoHS Directive 2011/65/EU.

⁴ Controlled unload at ambient condition.

⁵ See <http://support.wd.com/warranty> for regional specific warranty details.

⁶ No non-recoverable errors during operating tests or after non-operating tests.

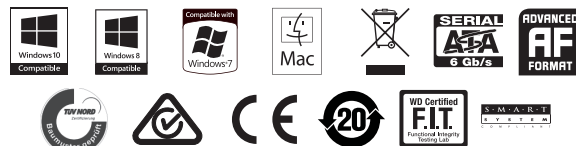
⁷ Sound power level.

Western Digital
3355 Michelson Drive, Suite 100
Irvine, California 92612
U.S.A.

For service and literature:

<http://support.wd.com>
www.wd.com

800.ASK.4WDC North America
(800.275.4932)
800.832.4778 Spanish
+86.21.2603.7560 Asia Pacific
00800.27549338 Europe
(toll free where available)
+31.880062100 Europe/Middle East/
Africa



CAN ICES-3 (B) / NMB-3 (B)

WD, the WD logo, AllFrame 4K, IntelliSeek, FIT Lab, and WD Purple are registered trademarks or trademarks of Western Digital Corporation or its affiliates in the US and/or other countries. All other marks are the property of their respective owners. Product specifications subject to change without notice. Picture shown may vary from actual product. Not all products are available in all regions of the world.

© 2017 Western Digital Corporation or its affiliates. All rights reserved.

2879-800012-A06 Mar 2017