

Unmanaged Ethernet PoE Switches

HP2020-8T2GT-LPOE-IN



Features

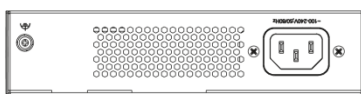
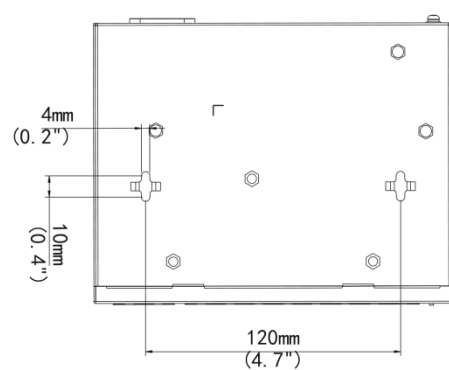
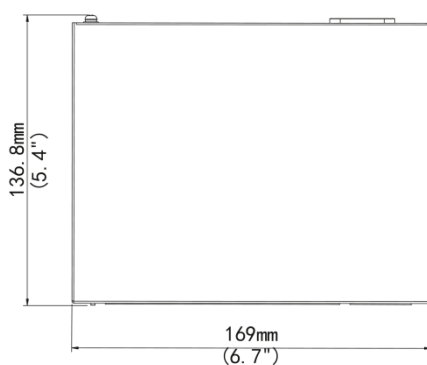
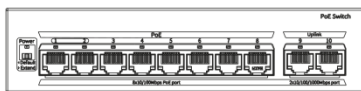
- Multiple working modes to address your business needs: Default (Normal mode), EXTEND (Surveillance mode)
- Support port traffic control
- Support for secure mode, all downlink ports can communicate only with uplink ports
- Up to 250m transmission distance on surveillance mode
- Support buffer optimization
- All metal housing, safe and reliable

Specifications

Model	HP2020-8T2GT-LPOE-IN
Hardware Specification	
Ports Type	8×10/100Mbps PoE ports (RJ45), 2×10/100/1000Mbps ports
Switching capacity	5.6 Gbps
Packet Buffer	2 M bit
Forwarding performance	4.17Mpps
Power Supply	AC: 100 to 240V, 50/60Hz
MAC	4K
PoE Standard	IEEE 802.3 at, IEEE 802.3af
PoE Mode	ModeA (1236), ModeB (4578)
Max.PoE Power	Max capacity:65W Max capacity for single port: 30W

Prior Ports	1 to 2
Standards	IEEE802.3, IEEE802.3u, IEEE802.3az, IEEE802.3x, IEEE802.3af, IEEE802.3at
Cooling Fans	0
Max.Power	75W
Operating Temperature	0°C to 45°C (32°F to 113°F)
Operating Humidity	10% to 90% (noncondensing)
Indicator	Power: Off: Abnormal power input. Green: Normal power input. Yellow: The total PoE power is higher than 85% of the total power of the device. LINK/ACT: Off: No link Steady on: Linked Flashing: Transmitting data
Dimensions (W×D×H)	169*132*40mm
Weight	0.67KG
Working Mode	Default (Normal mode) : All ports can communicate with each other, EXTEND (Surveillance mode): Transmission distance up to 250 meters
Compliance	
NDAA Compliant	Support

Dimensions



VIDEOMONT D.O.O.

PON-PET 08:00-16:00 h

SUB 09:00-13:00 h

**Tošin bunar 166/2
11080 Novi Beograd
Republika Srbija**



**Kontakt telefon:
+381 11 311 64 16
office@videomont.rs**