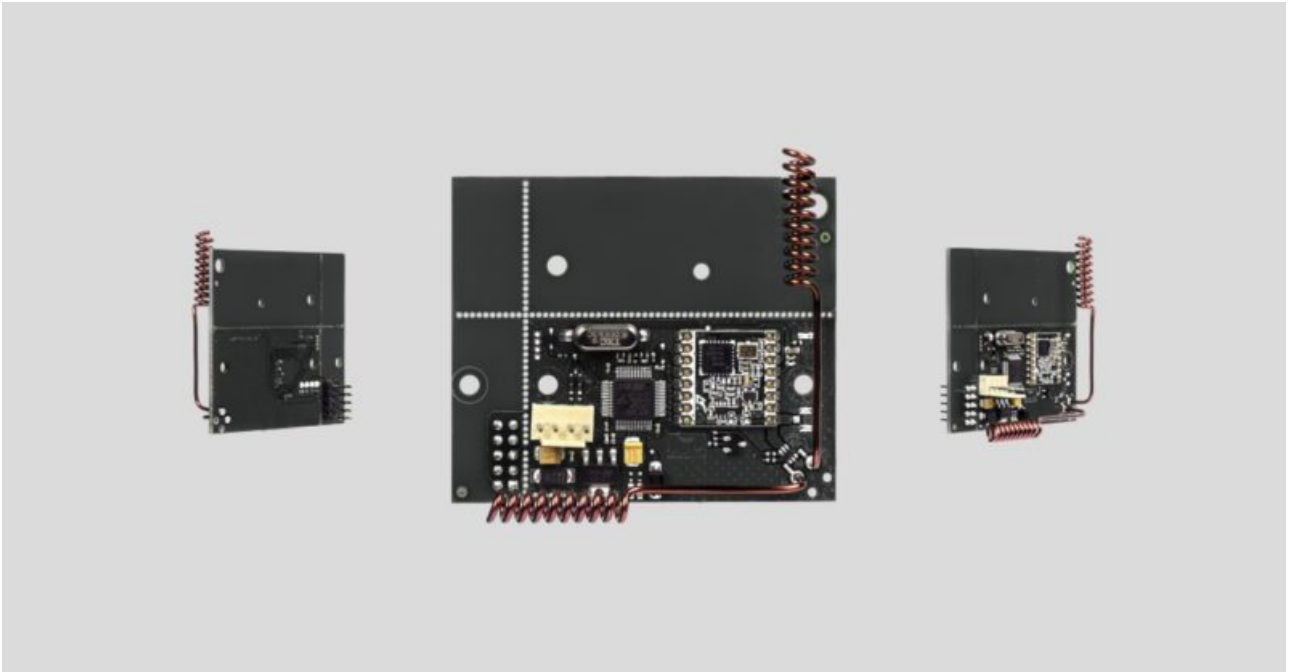


uartBridge user manual

Updated February 7, 2022



uartBridge — is the module for integration with third-party wireless security and smart home systems.

A wireless network of smart and secure Ajax detectors can be added to a third-party security or smart home system through the UART interface.



Connection to [Ajax hubs](#) is not supported.

[Buy uartBridge](#)

Supported sensors:

- **[MotionProtect](#)** (**[MotionProtect Plus](#)**)
- **[DoorProtect](#)**

- [SpaceControl](#)
- [GlassProtect](#)
- [CombiProtect](#)
- [FireProtect](#) ([FireProtect Plus](#))
- [LeaksProtect](#)

Integration with third-party detectors is implemented at protocol level.

[uartBridge communication protocol](#)

Tech specs

Communication interface with central unit	UART (speed 57,600 Bd)
Use	Indoor
Radio signal power	25 mW
Radio communication protocol with Ajax devices and detectors	Jeweller Learn more
Radio frequency band	866.0 – 866.5 MHz 868.0 – 868.6 MHz 868.7 – 869.2 MHz 905.0 – 926.5 MHz 915.85 – 926.5 MHz 921.0 – 922.0 MHz Depends on the region of sale.
Maximum distance between a wireless detector and uartBridge integration module	Up to 2,000 m (in open area)
Maximum number of connected devices	85
Detection of jamming	Yes
Detector performance monitoring	Yes
Power supply voltage	DC 5 V (from the UART interface)
Operating temperature range	From -10°C to +40°C
Operating humidity	Up to 90%

Dimensions	64 × 55 × 13 mm (without antennas) 110 × 58 × 13 mm (with antennas)
Service life	10 years

Compliance with standards

Subscribe to the newsletter about safe life. No spam

Email

Subscribe