

## Combination Key Safe Box Instruction

### To open the key box

1. Slide shutter board to reveal the dials.
2. Rotate dials to the current combination (factory combination is 0-0-0-0).
3. Push button 1 near the dials to open the lock box.
4. After the box is opened, to pull the shackle in or out, pull button 2 inside the box from right to left. After pulling the shackle in or out, loosen button 2. Keys can be put in or taken out, as shown in Pic1



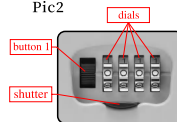
Pic1



Pic2

Open the box, push the button inside the box to plug out the shackle, shown in Pic2 (for Items:

5. When ready to close the lock box, upset the dials to protect your combination.
6. Close the shutter.



Pic3

### To set your combination

1. Open the key safe box (factory setting is 0-0-0-0).
2. Move the RESET button from position 'A' to position 'B', as shown in Pic4.
3. Turn the dials to desired combination.
4. Move the RESET button from position 'B' back to position 'A'.
5. The new combination is now set.



Pic4

#### Important notes:

1. Keep the shutter board closed for water resistance.
2. It is recommended that the dials are rotated weekly to keep them working smoothly.

### Introduction

#### Uninstall the Hook

Take a small flat object, such as a small scissors, insert it into the hole on the side of the hook, and then lightly and slowly lift the hook out. Don't lift too fast or use too much force to avoid breaking the hook.

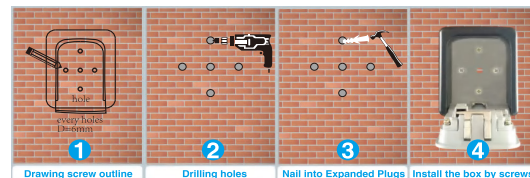
#### Install the Hook

Tilt the hook, place the left end in the mounting hole first, then pinch the right end of the hook with your thumb, and gently press down and left at the same time, so that the right end is also locked into the mounting hole, and you will clear a click sound.

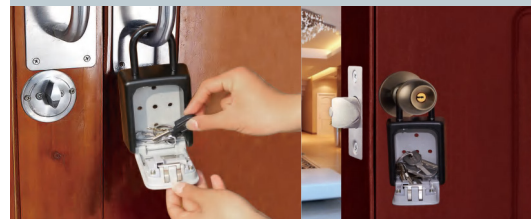
Pay attention to the direction of the hook and avoid installing it backward.



## Instruction



### Method 1: Installed on the wall



### Method 2: Installed on door handle