



Smart Accessory Instruction Manual

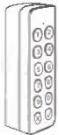


SF-SLKEYPAD-BT



Packing List

- Pinpad * 1



- Screws * 2



- Support*1



- USB data cable * 1



Parameters

Model	SF-SLKEYPAD-BT (Pinpad)
Compatible	Cloud SmartLock
Material	Plastic
Installation	Screw fixing
Size	108x35x24mm
Weight	174g
Battery	2*AA (Alkaline)
Endurance	12 months
Password Length	6 numbers

APP Installation & Use Tutorial

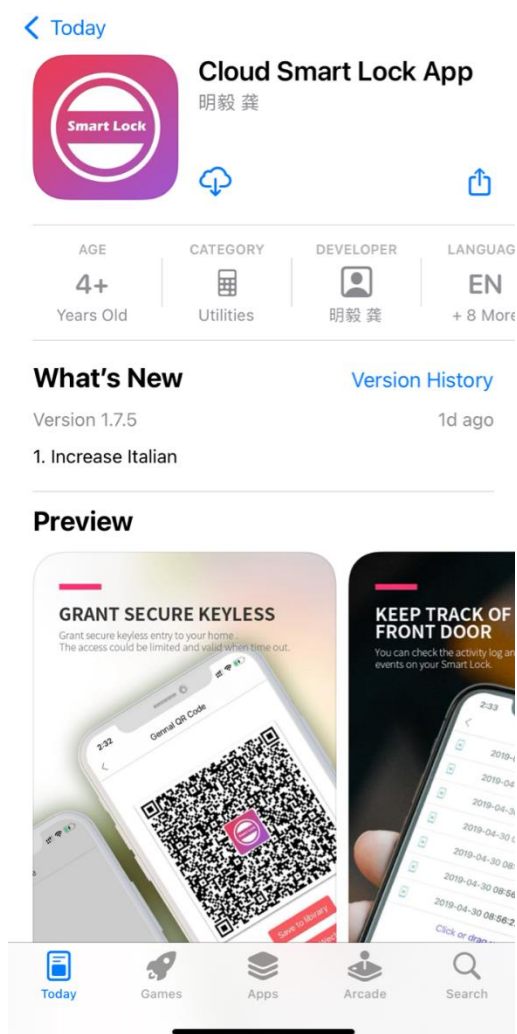
APP Download

Scan the QR code on the right or visit the website to download the app and register an account.

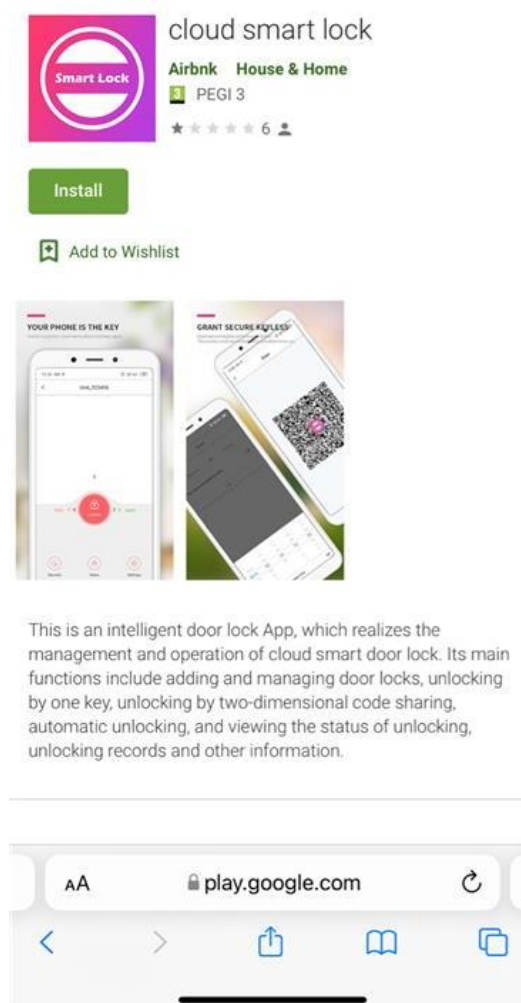


<http://safirecctv.com/rd/smart-lock/app>

IOS



Android

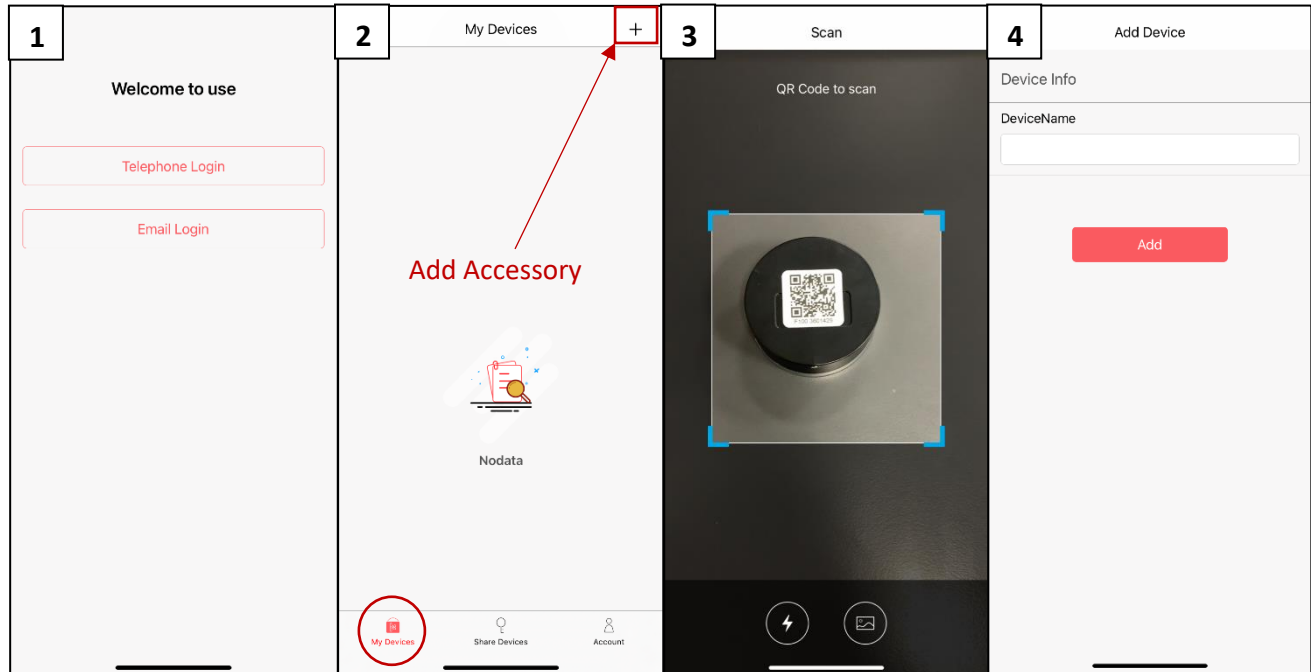


APP Operations



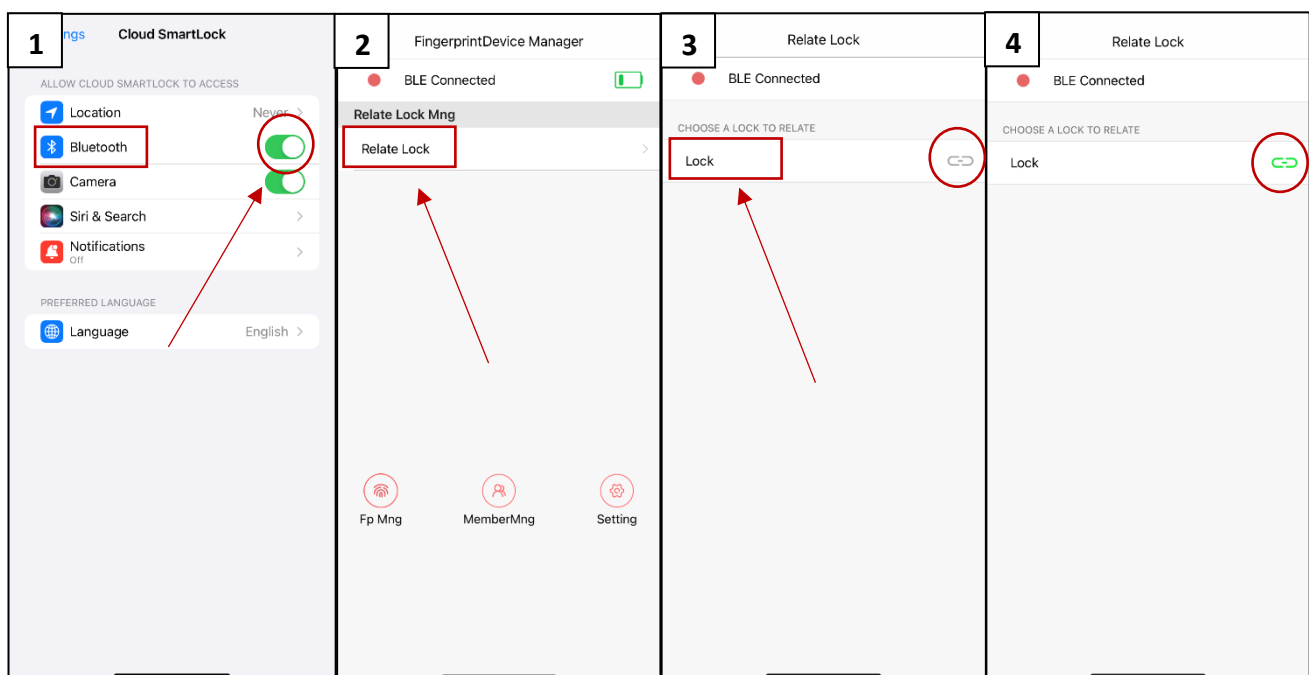
1. Add Accessory in the APP

To add an accessory, you must scan the QR code on the accessory.



2. Relate lock

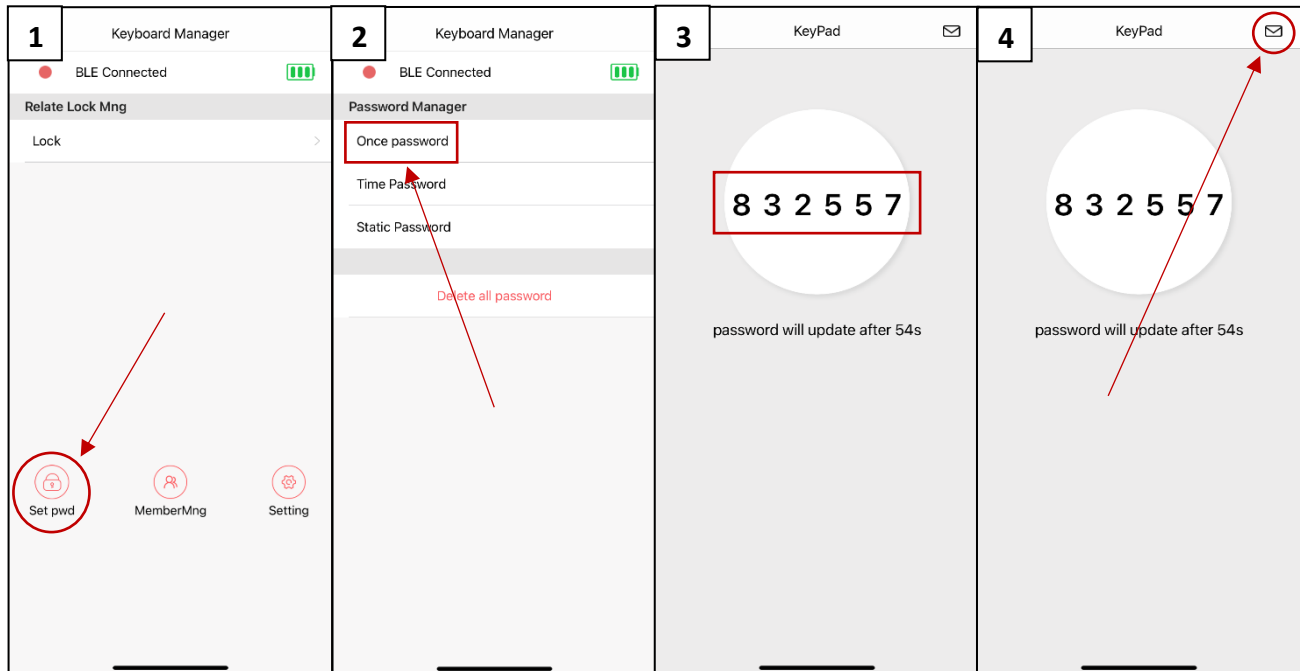
First of all, you must add the lock in the application by following the steps in the “Add Accessory” explanation. On the device click “Relate Lock” to bind the lock. The operation of binding the lock need to be done via Bluetooth. Be sure to enable Bluetooth before starting the operation.



3. Once Password

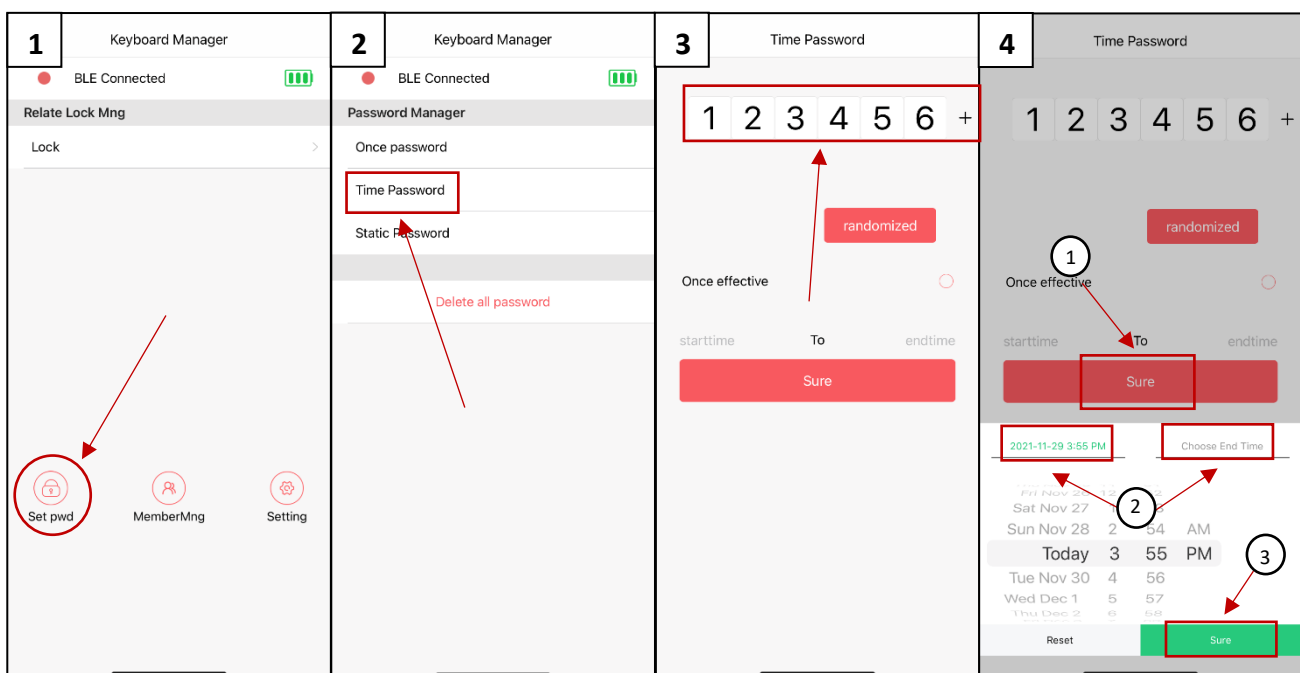


Enter the device page and click “Set pwd” for access to the password manager menu. Select “Once Password” option and the application will give you a random password. You can also send this password to your contacts for a quick access.



4. Time Password

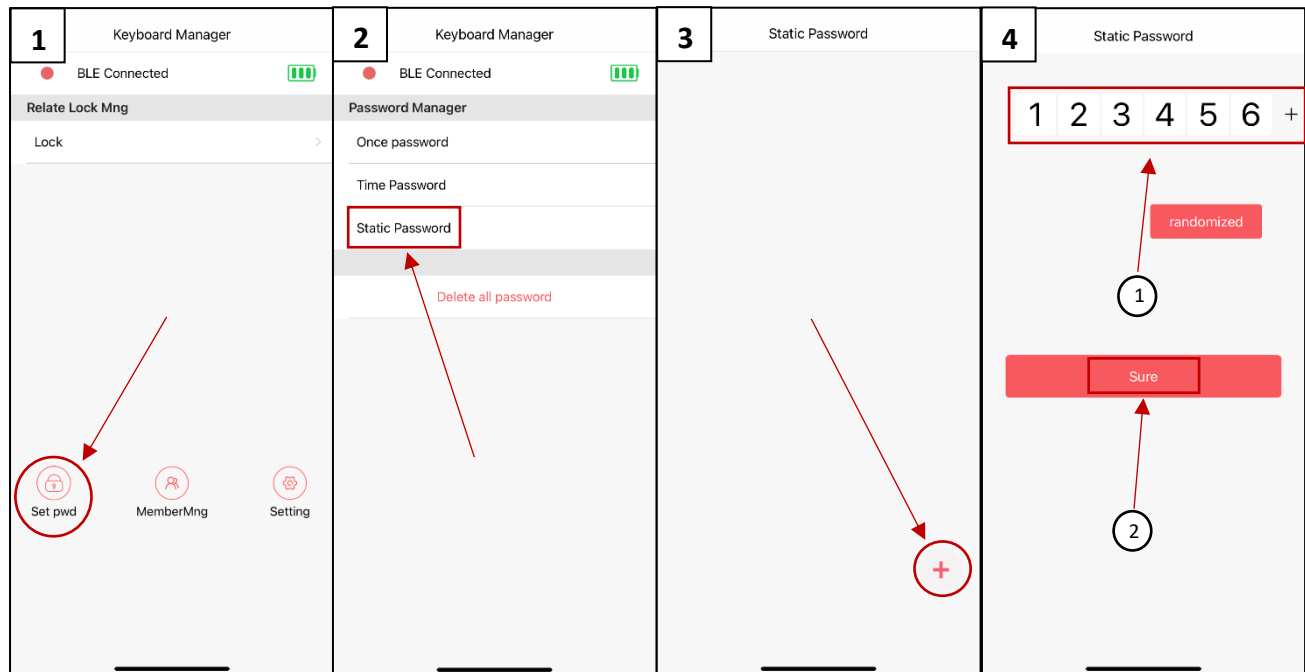
Enter the device page and click “Set pwd” for access to the password manager menu. Select “Time Password” option and set the password you want. Then set the Start-time, the end-time and click the “sure” button to set the changes.



5. Static Password



Enter the device page and click “Set pwd” for access to the password manager menu. Select “Static Password” option and set the password you want.



Installation

