



external cassette

For 2-wire video doorphone system

VDA-80A5



VDA-81A5



VDA-84A5



VDA-85A5



VDA-86A5



User manual and
technical specifications

contents

1. GENERAL CHARACTERISTICS AND PURPOSE OF THE CASSETTE.....4

2. CHARACTERIZATION OF THE EURA 2 EASY SYSTEM.....4

3. CONSTRUCTION OF THE EXTERNAL CASSETTE 5

4. description of external terminals and adjustment elements6

5. INSTALLATION OF THE EXTERNAL CASSETTE6

 5.1. INSTALLATION OF SURFACE-MOUNTED BOXES.....6

 5.2. INSTALLATION OF THE FLUSH-MOUNTED CASSETTE..... 7

6. CONNECTION DIAGRAMS FOR THE CASSETTE WITH ELECTROMAGNETIC LOCK8

6. CONNECTION DIAGRAMS OF THE CASSETTE WITH OTHER SYSTEM MODULES.....9

7. fisHeye CAMERA.....11

8. ADDITIONAL EXTERNAL MOTION SENSOR 12

9. PROGRAMMING THE EXTERNAL CASSETTE 12

 9.1. EXTERNAL CASSETTE ADDRESSING SETTINGS 13

 9.3. CAMERA IMAGE QUALITY SETTINGS 14

 9.4. LOCK RELEASE MODE SETTINGS..... 14

 9.5. SETTING THE LOCK RELEASE TIME 15

 9.6. SETTING THE BUSINESS HOLDER BACKLIGHT MODE 15

 9.7. night light settings..... 15

 9.8. SETTING THE CALL SOUND IN THE EXTERNAL CASSETTE 16

 9.9. IMAGE DISPLAY MODE SETTINGS17

 9.9.1. WHEN A TENANT IS CALLED17

 9.9.2. WHEN THE CALL IS RECEIVED BY THE TENANT.....17

10. CASSETTE PROGRAMMING – ID CARDS REGISTRATION..... 18

 10.1. MASTER CARDS AUTHORIZATION 18

 10.2. ADDING USER CARDS..... 19

 10.3 DELETING INDIVIDUAL USER CARDS..... 19

 10.4. DELETING ALL USER CARDS..... 19

11. SPECIFICATION..... 20

WARRANTY CARD23

introductory remarks

Before connecting and using the device, please read this user manual carefully. If you have any problems understanding its content, please contact the seller of the device. Self-assembly and start-up of the device is possible provided that the installer has basic knowledge of electrical engineering and uses the appropriate tools. Nevertheless, it is recommended that the device be assembled by qualified personnel. The importer is not responsible for damage that may result from incorrect assembly or use of the device or from performing independent repairs and modifications.

1. GENERAL CHARACTERISTICS AND PURPOSE OF THE CASSETTE

VDA-80A5, VDA-81A5, VDA-84A5 and VDA-85A5/VDA-86A5 are respectively one-, two-, three- and four-room external cassettes fully compatible with the Eura 2 Easy system. It is equipped with a card and proximity key fob reader, used to open the entrance to the property. A colour wide-angle Fisheye camera is used to transmit the video signal, observation at dusk is supported by a set of 3 white LEDs, together with a twilight sensor. The VDA-80A5, VDA-81A5, VDA-84A5 and VDA-85A5 cassettes are designed for surface mounting, and the VDA-86A5 cassette for flush mounting.

2. CHARACTERIZATION OF THE EURA 2 EASY SYSTEM

The 2-wire Eura 2 Easy system is a single or multi-tenant video intercom system, the main idea of which is the simplicity of installation, achieved by minimizing the number of cables and power supplies used. A 2-wire cable is enough to connect individual modules working in the system, which can handle a maximum of 256 monitors and 4 external stations. Thanks to the use of FM modulation to transmit the video signal and ASK modulation to transmit control data, the system is distinguished by high resistance to interference, i.e. very good image color quality at every point of the installation.

Here are the basic functions of the system:

- 2-wire cable connection system between modules at each point of the installation, the method of disconnecting both wires is optional (no signal polarity),
 - possibility of using 1 central power supply in the entire system, easy and quick installation thanks to the use of simple plugs and DIP switches,
 - possibility of installing more monitors within 1 premises (with the same user code),
 - ability to answer the call using a landline or mobile phone.
 - In addition to external cassettes, it is also possible to connect cameras monitoring a maximum of 4 cameras to the system.
 - Intercom function between tenants within one system,
 - Maximum distance of the outdoor station from the farthest monitor 150 m.
- The system can be expanded to support 2 independent electromagnetic locks. It is possible to connect additional external cassettes and an additional bell (calling gong), as well as the possibility of controlling lighting (e.g. in the staircase) or other devices triggered by a relay.

The basic configuration of the Eura 2 Easy system in a single-tenant building is shown in Fig. 1, while the basic configuration of the system in a multi-tenant building is shown in Fig. 2. A detailed description of the entire Eura 2 Easy system with all its modules is the subject of a separate instruction manual.

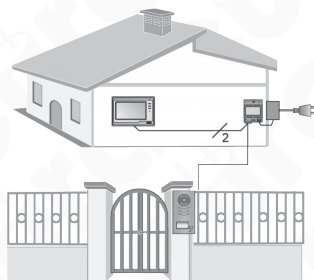


Fig. 1. Single-tenant configuration

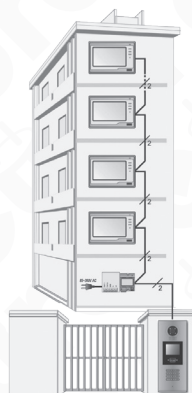


Fig. 2. Multi-tenant system configuration

3. CONSTRUCTION OF THE EXTERNAL CASSETTE

The construction of external cassettes based on the VDA-85A5 and VDA-86A5 cassettes together with the arrangement of all external elements is shown in Fig. 3.

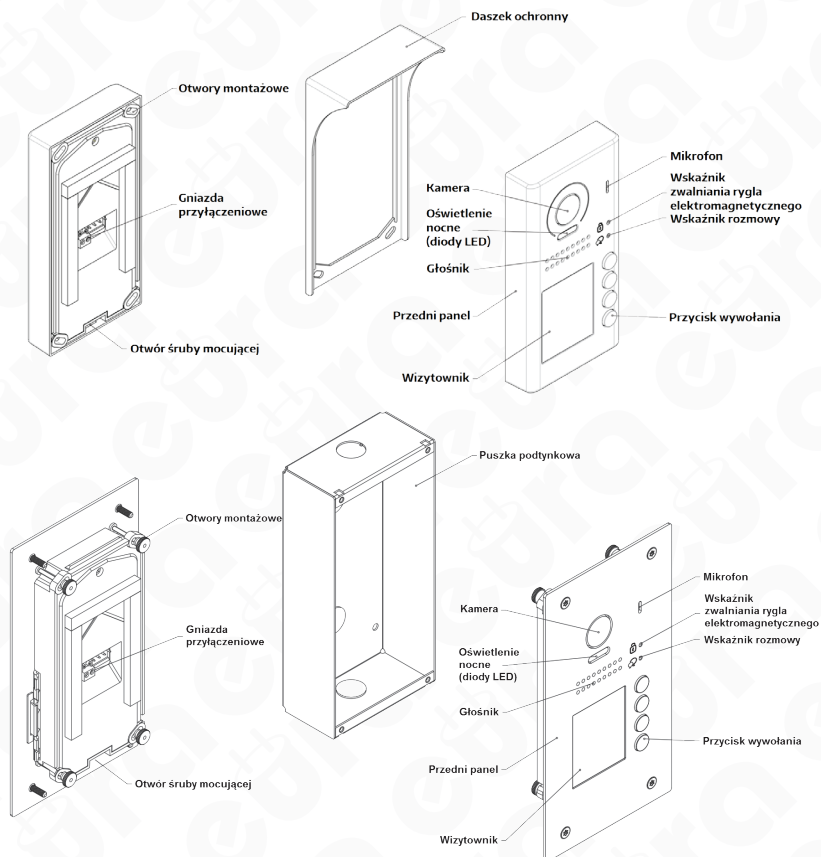


Fig. 3. Construction and description of the VDA-85A5 and VDA-86A5 external cassette

4. description of external terminals and adjustment elements

The description of the pins and adjustment elements of the external cassette based on the VDA-85A5 cassette is shown in Fig.4.

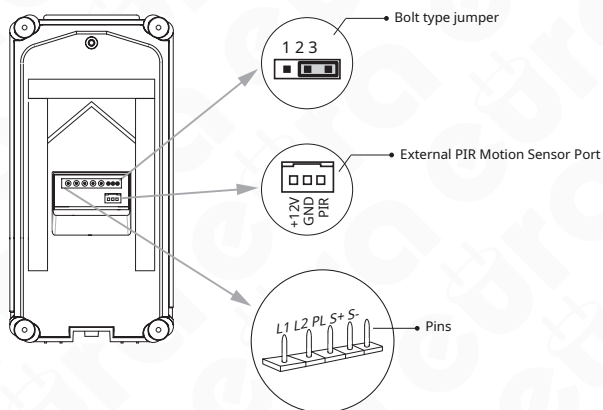


Fig. 4. Clamps and adjustment elements of the VDA-85A5 cassette

- Lock type jumper – setting depending on the lock type and its power supply (see chapter 6)
- Connection pins – for connecting the cassette with a 2-wire system bus and an electromagnetic lock:
 - L1, L2: connection to 2-wire bus, no polarity,
 - PL: positive pole input of the external lock power supply (+),
 - S+: positive pole of the lock power supply – when using the internal system power supply (without additional power supply for the lock),
 - S-: negative pole of the lock power supply – only when using the internal system power supply (without additional power supply for the lock).

5. INSTALLATION OF THE EXTERNAL CASSETTE

5.1. INSTALLATION OF SURFACE-MOUNTED BOXES

The VDA-80A5, VDA-81A5, VDA-84A5 and VDA-85A5 cassettes are designed for surface mounting. It is possible to mount the door station cassette on a wall/post both with and without a protective roof. The correct methods of installing the cassettes are shown in Fig. 5

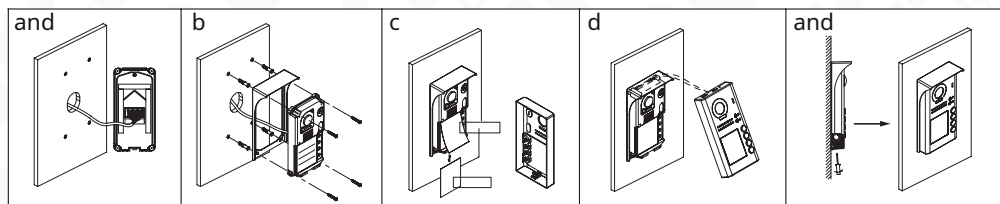


Fig. 5. Installing the VDA-85A5 external cassette with a roof

To install the cassette with a roof on a wall or post:

1. Using the key included in the kit, loosen the mounting screw located at the bottom of the cassette and remove the front metal part of the casing.
2. Mark the locations for the mounting screws through the four holes in the cassette roof, then drill holes in the marked locations and insert the mounting plugs (see Fig. 5b).

3. Connect the cables from the monitor(s), power supply and electromagnetic lock to the cassette terminals according to the connection diagram.
4. Place the tenant's name in the information sign window (details below).
5. Attach the roof and rear housing, then replace the front metal housing (Fig. 5d).
6. Tighten the lower mounting screw to secure the cassette (Fig. 5e).

5.2. INSTALLATION OF A PLASTER-MOUNTED CASSETTE

The VDA-86A5 cassette is designed for flush mounting. The correct way to install the cassette is shown in Fig. 6.

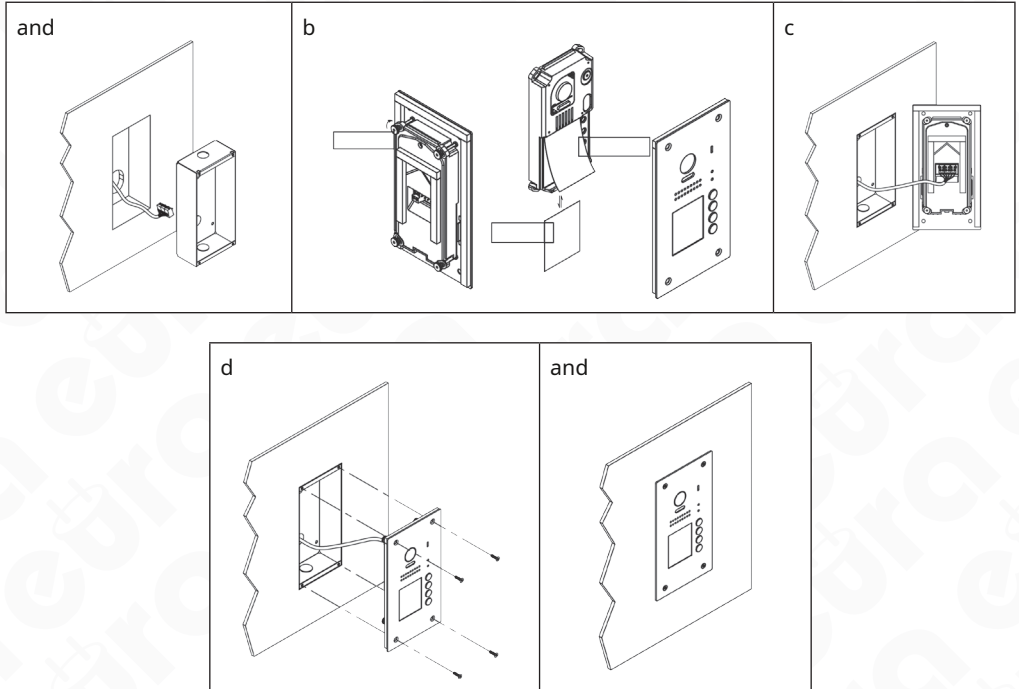


Fig.6. Installing the VDA-86A5 external cassette

To install the cassette in the wall:

1. Cut a rectangular hole in the wall for the flush-mounted cassette box.
2. Using the 4 holes located at the bottom of the flush-mounted box, mark the places for the mounting screws at the bottom of the opening, drill the holes and insert the mounting plugs in them.
3. Place the mounting box into the hole in the wall (Fig. 6a).
4. Place the tenant's name in the information sign box (details below).
5. Connect the cables from the monitor(s), power supply and electromagnetic lock (see Fig. 6c) to the cassette terminals according to the connection diagram.
6. Use 4 screws to secure the cassette in the wall opening (Fig. 6d).

To mount the name card with the tenant's name, separate the front metal part of the cassette housing from the rear by loosening 4 nuts and place the tenant's data in the window on the inside of the front part of the housing (Fig. 6b). Then reattach the parts of the cassette housing using nuts.

6. CONNECTION DIAGRAM OF THE CASSETTE WITH AN ELECTROMAGNETIC LOCK

Fig. 7-8 shows different variants of connecting the cassette to the electromagnetic lock, depending on the type and method of its power supply. The electromagnetic lock is an additional accessory.

It is possible to power the electromagnetic lock alternatively from:

- a. internal power supply of the system (video intercom power supply), only when using electromagnetic locks with a rated operating voltage of 12V and current consumption not exceeding 250mA,
- b. an external (separate) power supply for the electromagnetic lock, in case of using other electromagnetic locks, but with electrical parameters not exceeding 230V AC / 1 A or 24V DC / 1 A.

In the first case (a) it is necessary to leave the lock type jumper in the socket, in position "2-3" for standard electromagnetic locks (triggered by a voltage pulse).

In the second case (b) it is necessary to remove the latch type jumper from.

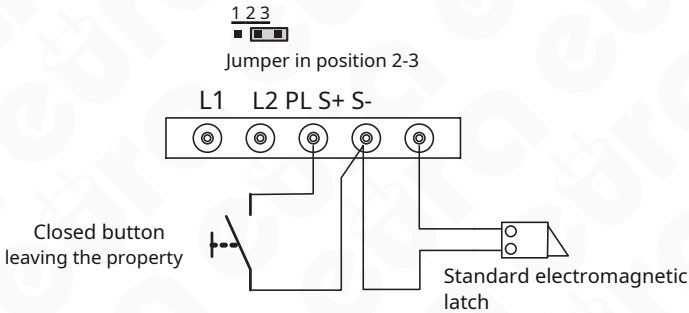


Fig. 7. Connecting the lock to the cassette, standard lock (voltage-triggered), internally powered

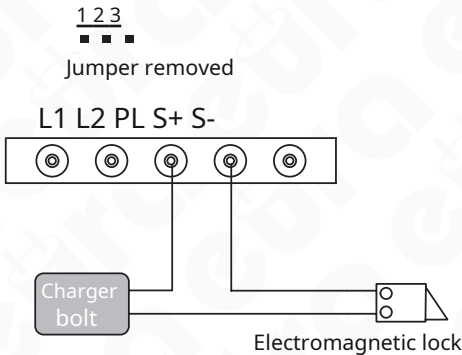


Fig. 8. Connecting the lock to the cassette, standard lock (voltage-triggered), powered by an additional power supply

6. CONNECTION DIAGRAMS OF THE CASSETTE WITH OTHER SYSTEM MODULES

The connection method using the example of the VDA-85A5 cassette with the VZA-57A5 power supply module, the VXA-47A5 module and the monitor is shown in diagrams 9-11.

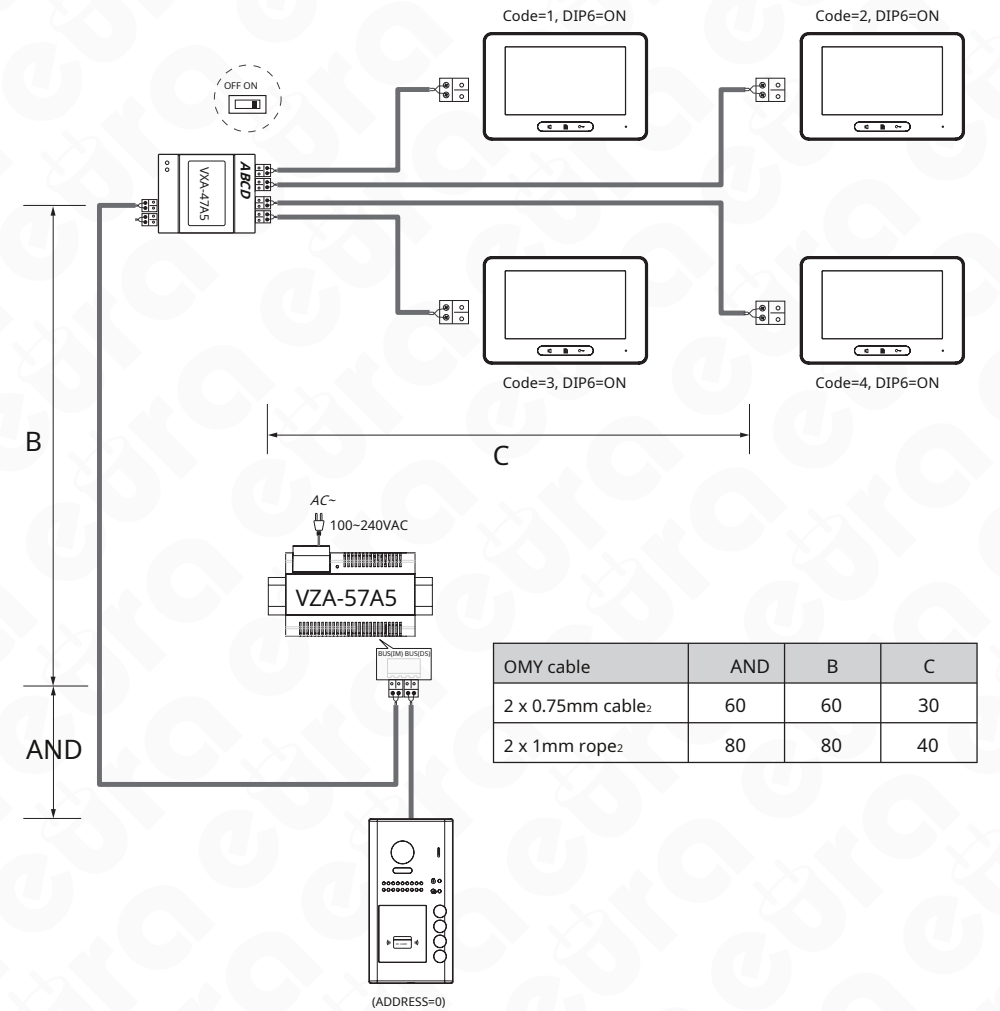


Fig. 9. Diagram of the expansion of the example set with the VDA-85A5 cassette with additional monitors, using a distribu-VXA-47A5 signal converter and selection of the length and cross-section of cables in the Eura 2 Easy system

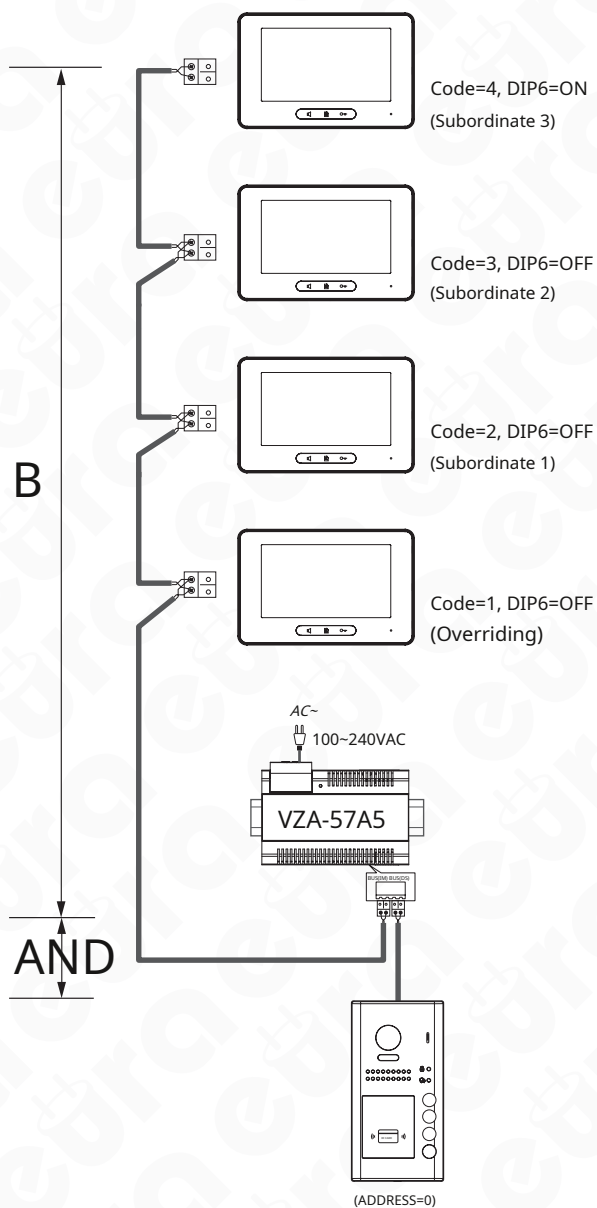


Fig. 10. Diagram of the expansion of the sample set with the VDA-85A5 cassette with additional monitors and the selection of the length and cross-section of cables in the Eura 2 Easy system

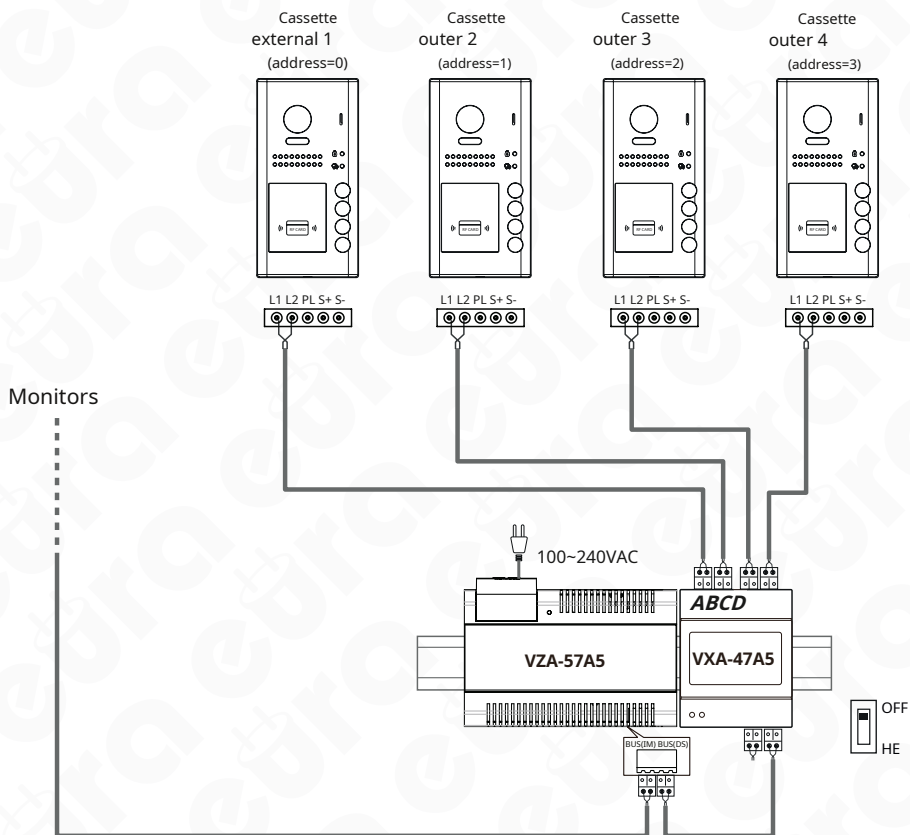


Fig. 11. Diagram of expanding the sample set with the VDA-85A5 cassette with additional external cassettes

7. fisheye camera

The VDA-80A5, VDA-81A5, VDA-84A5, VDA-85A5 and VDA-86A5 outdoor cassettes have a wide-angle Fisheye camera with a horizontal viewing angle of 170°. Monitors supporting the view from such a camera allow for magnification of a very clear image in order to observe a larger group standing in front of the property.

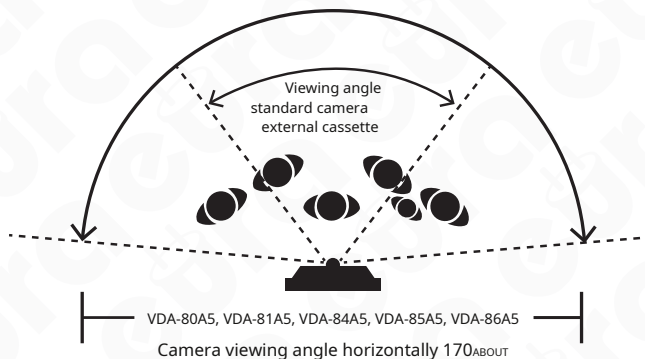


Fig. 12. The range of the observed area of the external cassette with the Fisheye camera

8. ADDITIONAL EXTERNAL MOTION SENSOR

The VDA-80A5, VDA-81A5, VDA-84A5, VDA-85A5 and VDA-86A5 external cassettes are equipped with a port for connecting an external PIR motion sensor (not included in the set). After detecting movement by the sensor, the external cassette can turn on its lighting or release the electromagnetic lock. A PIR motion sensor for outdoor use, with NO contact support, powered by DC 12V, should be used.

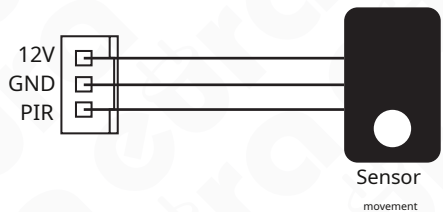


Fig. 13. Diagram of connecting the PIR motion sensor to the external cassette

9. PROGRAMMING THE EXTERNAL CASSETTE

To program the external cassette VDA-80A5, VDA-81A5, VDA-84A5, VDA-85A5 or VDA-86A5, always remove the front panel of the device housing. Each setting is made after connecting the cassette to the power supply and pressing the settings button a specified number of times. The introduction of a change is signaled optically by lighting up the LED and acoustically by a sound signal.

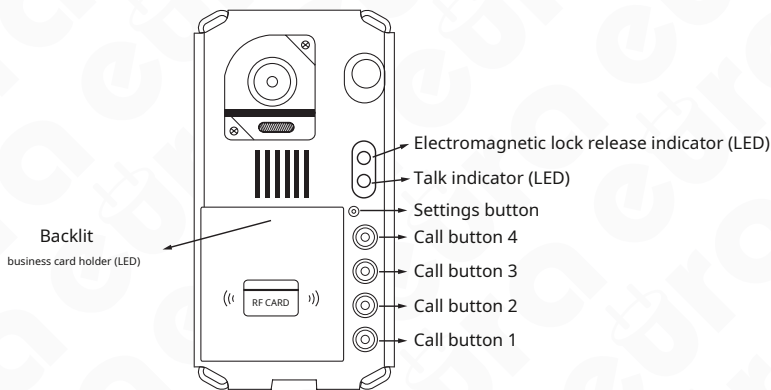


Fig. 14.

The programmable functions are shown in the table below:

No.	function	Parameter range	default value
1	Device Address Settings	0~3	0
2	Cassette call operation mode	Standard / Group	Standard
3	Camera image quality settings	High / Low	High
4	Setting the bolt release mode	0:normal / 1:reverse	0:normal
5	Setting the bolt release time	From 01 to 99 seconds	1 second
6	Business card holder backlight settings	On / Off / Automatic	Enabled
7	Night light settings	On / Off / Automatic	Machine
8	External cassette call tone settings	Single beep / Continuous beep / None signal	Single Signal
9	Image display mode settings	Select Mode / Zoom / Full Screen	Selection mode

Table 1. Programmable functions of the external cassette

During the setting process, the illuminated card holder will flash continuously until you finish and exit the setting mode. You can enter the cassette setting mode by pressing the setting button a set number of times, and exit by pressing it three times (in quick succession). Additionally, if there is no action for 10 seconds in the cassette setting mode, the device will automatically exit the setting mode.

9.1. EXTERNAL CASSETTE ADDRESSING SETTINGS

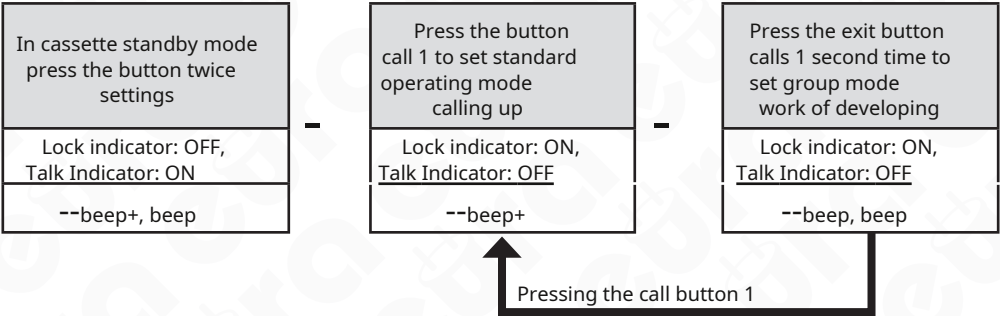
It is possible to set 4 addresses for each external cassette, starting with "0" (default: 0).

Code=0, for 1 cassette external	—	<div>In standby mode cassettes press the button settings</div> <div>Point out bolt nik:OFF, Talk Indicator:OFF</div> <div>--beep+,beep</div>	—	<div>Press the button call 1 for first cassettes</div> <div>Lock indicator:OFF, Talk Indicator:ON</div> <div>--beep+</div>
Code=1, for 2nd cassette external	—	<div>In standby mode cassettes press the button settings</div> <div>Lock indicator:OFF, Talk Indicator:OFF</div> <div>--beep+,beep</div>	—	<div>Press call button 2 for the second cassette</div> <div> Lock indicator:OFF, Talk Indicator:ON</div> <div>--beep, beep</div>
Code=2, for 3rd cassette external	—	<div>In standby mode cassettes press the button settings</div> <div>Lock indicator:OFF, Talk Indicator:OFF</div> <div>--beep+,beep</div>	—	<div>Press call button 3 for the third cassette</div> <div>Lock indicator:OFF, Talk Indicator:ON</div> <div>--beep, beep, beep</div>
Code=3, for 4 cassettes external	—	<div>In standby mode cassettes press the button settings</div> <div>Lock indicator:OFF, Talk Indicator:OFF</div> <div>--beep+,beep →</div>	—	<div>Press call button 4 for the fourth cassette</div> <div>Lock indicator:OFF, Talk Indicator:ON</div> <div>--beep, beep, beep, beep</div>

9.2. CASSETTE DEVELOPMENT OPERATION MODE

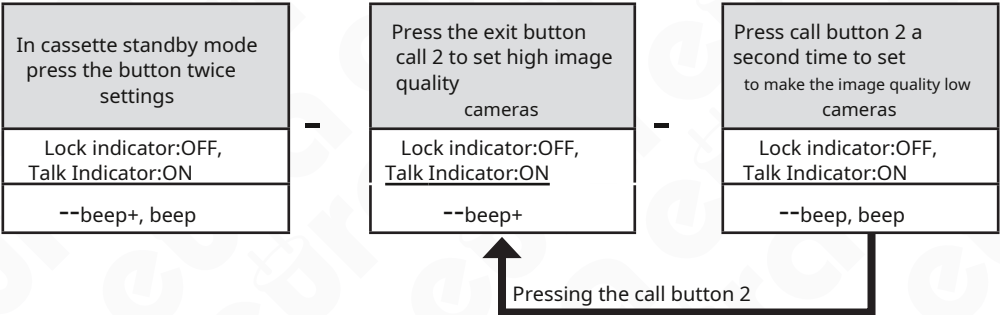
There is a choice of calling the tenants from the cassette in two different ways (factory setting: Standard). The first standard way assumes that pressing call button 1 will call the monitor with the set address 01 (default setting), pressing call button 2 will call the monitor with the set address 02 (default setting), etc. up to the fourth call button (for a 4-button external cassette).

The second method assumes that pressing call button 1 will call a group of monitors with set addresses from 00 to 15 (one of the monitors must have address 00 set). Pressing any of the other call buttons will call a group of monitors with set addresses from 16 to 31 (one of the monitors must have address 16 set).



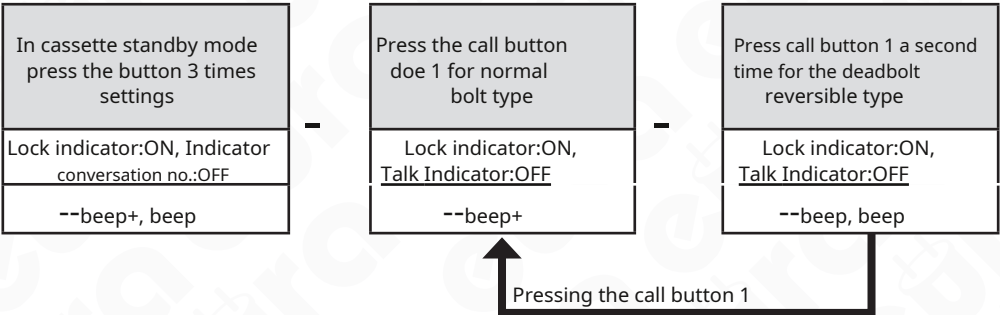
9.3. CAMERA IMAGE QUALITY SETTINGS

Follow the steps below to change the image quality recorded by the cassette camera (default: High).



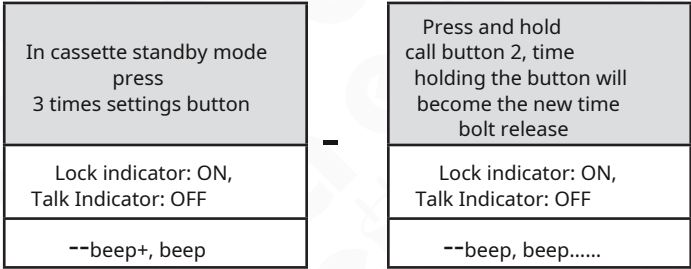
9.4. LOCK RELEASE MODE SETTINGS

The following steps should be performed to change the electromagnetic lock release mode for a given lock type (default: 0 - normal lock).



9.5. SETTING THE LOCK RELEASE TIME

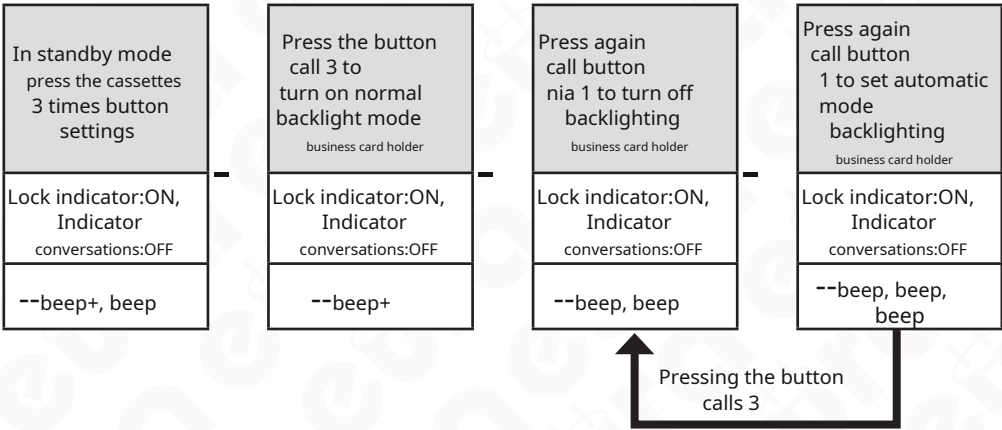
Follow the steps below to change the electromagnetic lock release time (default: 1 second).



9.6. SETTING THE BUSINESS HOLDER BACKLIGHT MODE

Follow the steps below to change the card holder backlight mode (default: On). There are three modes:

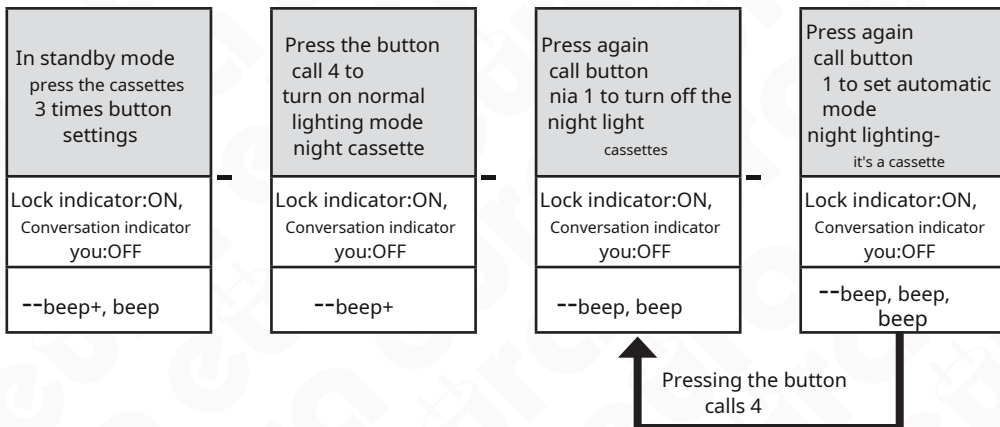
- business card holder backlight turned on,
- business card holder backlight off,
- automatic illumination of the business card holder, using a working twilight sensor or the included PIR motion sensor.



9.7. night light settings

The following steps should be performed to change the night light mode of the cassette (factory setting: Automatic). There are three modes:

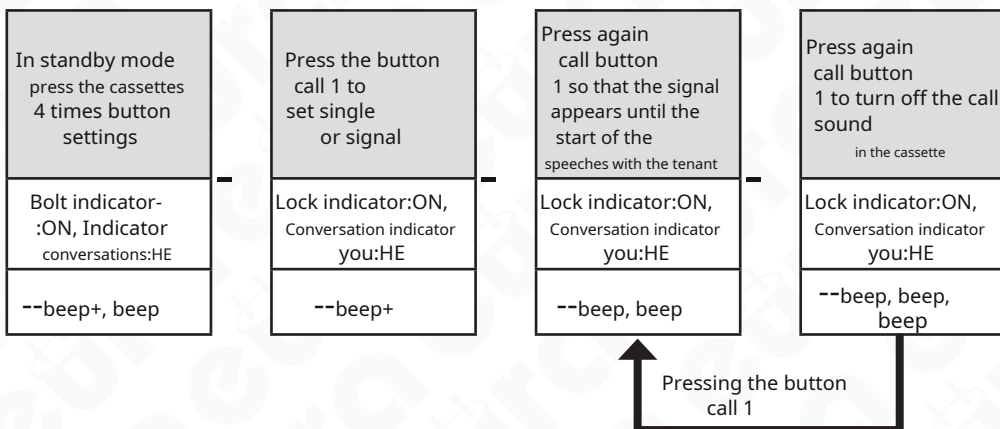
- cassette night light is turned on,
- cassette night light turned off,
- automatic switching on of the cassette's night lighting, using a working twilight sensor.



9.8. CALL SOUND SETTINGS ON THE EXTERNAL CASSETTE

The following steps should be performed to change the functioning of the call sound that appears in the external station immediately after pressing the call button (factory setting: Single signal). There are three modes:

- a single, one-time sound signal that appears immediately after pressing the call button,
- a continuous sound signal until the call is picked up and a conversation with the tenant begins,
- disabling the function.



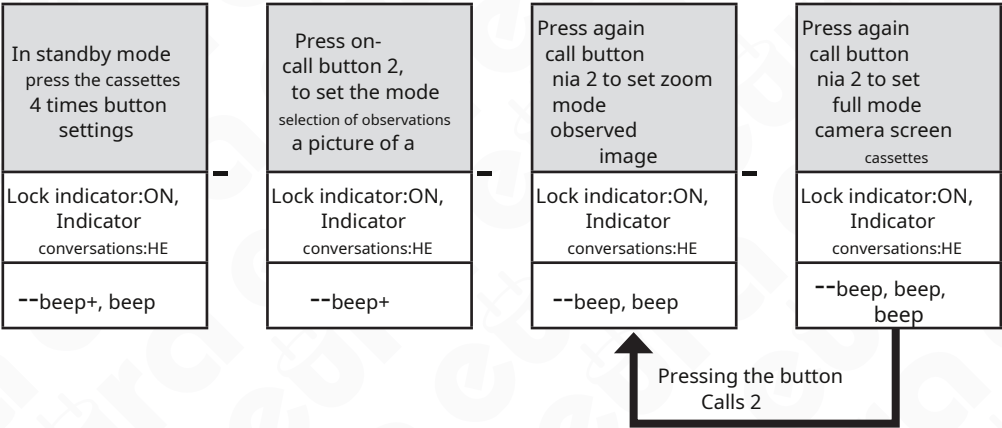
9.9. IMAGE DISPLAY MODE SETTINGS

This function is only available in monitors that support reception of images from a cassette equipped with a Fisheye camera (factory setting: Selection Mode).

9.9.1. WHEN A TENANT IS CALLED

There are three ways to present the cassette image on the monitor:

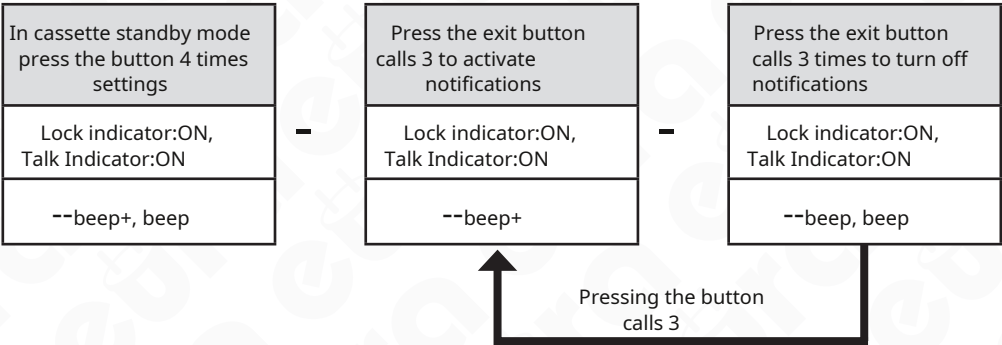
- The selection mode allows for a 5-second selection of the displayed image from the external cassette camera, between Enlargement of a fragment of the observed image and the Full screen recorded by the cassette camera,
- Zoom allows you to see the entire image recorded by the camera, and after 5 seconds it enlarges its central point,
- Full screen always displays the entire image from the Fisheye camera.



9.9.2. WHEN THE CALL IS RECEIVED BY THE TENANT

When calling from an external cassette, a notification appears that is different for each set image display mode (factory default: Active):

- For the selection mode, the enabled notification function does not work (even though it is active),
- For zoom mode, the notification function will display the full screen of the Fisheye camera for 5 seconds and then enter zoom mode
- For full screen mode, when the notification function is turned on, it displays the image in zoom mode for 5 seconds and then switches to full screen mode.



10. CASSETTE PROGRAMMING - ID CARDS REGISTRATION

It is possible to register up to 320 ID cards (users) for one cassette. Optical LED indicators located next to the card reader, together with sound signals, facilitate cassette programming functions. There are 2 types of MASTER cards (Fig. 15) used to register or delete users (USER cards):

- MASTER CARD ADD, used to register a new user,
- MASTER CARD DELETE, used to remove a user from the system

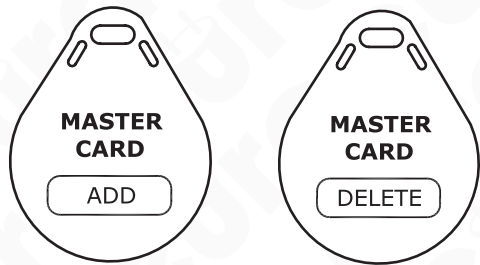


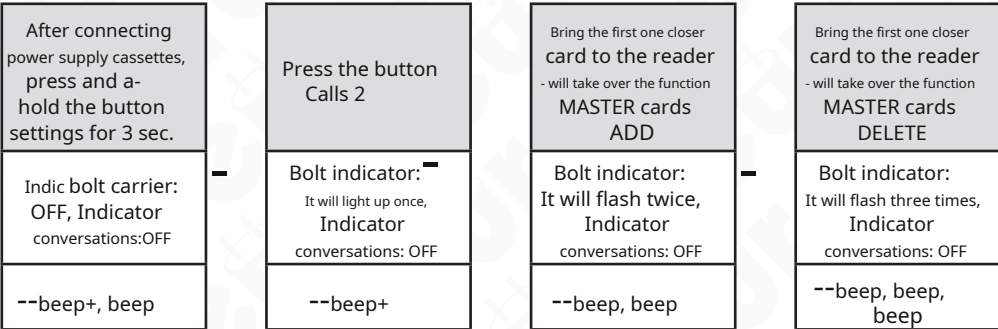
Fig. 15

When registering a new MASTER card in the system, the previously registered MASTER card automatically ceases to be valid. The card reading range of the reader is up to 3 cm.

Attention:
Keep both MASTER cards (ADD and DELETE) in a safe place.

10.1. MASTER CARDS AUTHORIZATION

By default (factory), the two cards that are part of the cassette are MASTER cards (MASTER ADD, MASTER DELETE). However, each of the user cards (USER) can be reprogrammed to a MASTER card at any time. After changing the USER card function to a MASTER card, the previous MASTER card loses its validity. The new card authorization operation is performed immediately after switching on the external cassette power supply in the following manner:



Attention:
No operation within 10 seconds will cause the cassette to return to standby mode.

10.2. ADDING USER CARDS

In cassette standby mode, bring the MASTER card closer ADD to the reader in mode vigils	—	Bringing the next cards closer USER to the reader in order to Added	—	Present your MASTER card ADD to the reader to complete the adding process vanya
INbolt indicator:OFF, Talk Indicator:ON		Lock indicator:OFF, Conversation indicator: It will light up once		Lock indicator:OFF, Talk Indicator:OFF
--beep+, beep		--beep+		--beep, beep+

Attention:
No operation within 10 seconds will cause the cassette to return to standby mode.

10.3 DELETING INDIVIDUAL USER CARDS

In cassette standby mode, bring the MASTER card closer DELETE to the reader in standby mode	—	Bringing the next cards closer USER to the reader, in order to remove them	—	Present your MASTER card DELETE to the reader to complete the process removal
Lock indicator:ON, Talk Indicator:OFF		Bolt indicator: It will light up once, Talk Indicator: OFF		Lock indicator:OFF, Talk Indicator: OFF
--beep+, beep		--beep+		--beep, beep+

Attention:
No operation within 10 seconds will cause the cassette to return to standby mode.

10.4. DELETING ALL USER CARDS

In the cassette standby mode, bring the MASTER DE-LETE card close to the reader in vigils	—	Present your MASTER card ADD to reader	—	Present your MASTER card ADD to the reader again (cassette memory will be immediately formatted)
Lock indicator:ON, Talk Indicator:OFF		Lock indicator:ON, Talk Indicator:ON		Bolt indicator: Will light up several times, Talk Indicator: Lights up several times
--beep+, beep		--beep+, beep		--beep

Attention:
The cassette automatically returns to standby mode when no operation is performed for 10 seconds or after it is formatted.

11. specification

External cassette	VDA-80A5
Supply voltage	24V DC
Video signal parameters	1Vp-p 75 Ohm CCIR
Number of connecting wires	2, non-polarized
Number of premises served	1
Latch release supply voltage	12VDC, 280mA
Power consumption - standby / operation	0.8W / 3W
Image resolution	500 TVL
Horizontal camera viewing angle	170°
Camera sensor type	Color CMOS 1/2.7" Fisheye
Bolt activation time	1 ~ 99 sec
Housing material	Zinc alloy
Number of relay outputs	2
External cassette installation method	Surface mounted
Adjusting the camera eye position	NO
Night lighting	3 LEDs (white light), with twilight sensor
Proximity reader	Yes (proximity card, key fob)
Encryptor	NO
Fingerprint reader	NO
Protective roof	Yes
Protection factor	IP54
Temperature range of the cartridge	- 18°C ~ +55°C
External cassette dimensions (H x W x D)	176x90x27 (mm)
Net weight of the cassette	615g

External cassette	VDA-81A5
Supply voltage	24V DC
Video signal parameters	1Vp-p 75 Ohm CCIR
Number of connecting wires	2, non-polarized
Number of premises served	2
Latch release supply voltage	12VDC, 280mA
Power consumption - standby / operation	0.8W / 3W
Image resolution	500 TVL
Horizontal camera viewing angle	170°
Camera sensor type	Color CMOS 1/2.7" Fisheye
Bolt activation time	1 ~ 99 sec
Housing material	Zinc alloy
Number of relay outputs	1
External cassette installation method	Surface mounted
Adjusting the camera eye position	NO
Night lighting	3 LEDs (white light), with twilight sensor
Proximity reader	Yes
Encryptor	NO
Fingerprint reader	NO
Protective roof	Yes
Protection factor	IP54
Temperature range of the cartridge	- 18°C ~ +55°C
External cassette dimensions (H x W x D)	176x90x27 (mm)
Net weight of the cassette	620g

External cassette	VDA-84A5
Supply voltage	24V DC
Video signal parameters	1Vp-p 75 Ohm CCIR
Number of connecting wires	2, non-polarized
Number of premises served	3
Latch release supply voltage	12VDC, 280mA
Power consumption - standby / operation	0.8W / 3W
Image resolution	500 TVL
Horizontal camera viewing angle	170°
Camera sensor type	Color CMOS 1/2.7" Fisheye
Bolt activation time	1 ~ 99 sec
Housing material	Zinc alloy
Number of relay outputs	1
External cassette installation method	Surface mounted
Adjusting the camera eye position	NO
Night lighting	3 LEDs (white light), with twilight sensor
Proximity reader	Yes
Encryptor	NO
Fingerprint reader	NO
Protective roof	Yes
Protection factor	IP54
Temperature range of the cartridge	- 18°C ~ +55°C
External cassette dimensions (H x W x D)	176x90x27 (mm)
Net weight of the cassette	620g

External cassette	VDA-85A5
Supply voltage	24V DC
Video signal parameters	1Vp-p 75 Ohm CCIR
Number of connecting wires	2, non-polarized
Number of premises served	4
Latch release supply voltage	12VDC, 280mA
Power consumption - standby / operation	0.8W / 3W
Image resolution	500 TVL
Horizontal camera viewing angle	170°
Camera sensor type	Color CMOS 1/2.7" Fisheye
Bolt activation time	1 ~ 99 sec
Housing material	Zinc alloy
Number of relay outputs	1
External cassette installation method	Surface mounted
Adjusting the camera eye position	NO
Night lighting	3 LEDs (white light), with twilight sensor
Proximity reader	Yes
Encryptor	NO
Fingerprint reader	NO
Protective roof	Yes
Protection factor	IP54
Temperature range of the cartridge	- 18°C ~ +55°C
External cassette dimensions (H x W x D)	176x90x27 (mm)
Net weight of the cassette	620g

External cassette	VDA-86A5
Supply voltage	24V DC
Video signal parameters	1Vp-p 75 Ohm CCIR
Number of connecting wires	2, non-polarized
Number of premises served	4
Latch release supply voltage	12VDC, 280mA
Power consumption - standby / operation	0.8W / 3W
Image resolution	500 TVL
Horizontal camera viewing angle	170°
Camera sensor type	Color CMOS 1/2.7" Fisheye
Bolt activation time	1 ~ 99 sec
Housing material	Stainless steel
Number of relay outputs	1
External cassette installation method	Concealed
Adjusting the camera eye position	NO
Night lighting	3 LEDs (white light), with twilight sensor
Proximity reader	Yes
Encryptor	NO
Fingerprint reader	NO
Protective roof	NO
Protection factor	IP54
Temperature range of the cartridge	- 18°C ~ +55°C
External cassette dimensions (H x W x D)	220x119x52 (mm)
Net weight of the cassette	920g

WARRANTY CARD

product name: **external cassette**

model: **VDA-80A5** **VDA-81A5** **VDA-84A5**

VDA-85A5 **VDA-86A5**

date of sale

point of sale stamp and seller's signature

GENERAL TERMS AND CONDITIONS FOR WARRANTY REPAIRS

- Eura-Tech Sp. z o.o., with its registered office in Węjerowo at ul. Przemysłowa 35A (hereinafter referred to as the "Guarantor"), guarantees the proper operation of the device indicated in the Warranty (hereinafter referred to as the "Product").
- The warranty is granted for a period of 24 months, provided that the Product is used in accordance with the technical and operational conditions described in the user manual and accepted standards. The warranty is valid in the territory of the Republic of Poland. For selected products, e.g. carbon monoxide detectors, the warranty period may be longer, which is always specified with the product itself.
- The rights and obligations of the Guarantor and the Purchaser of the Product are governed by the provisions included in this Guarantee, which the Purchaser should familiarize themselves with before purchasing. The purchase of the Product is tantamount to acceptance of the terms of this Guarantee.
- The date from which the Warranty period is valid is the date of issue of the sales document recorded in the Warranty Card and the sales document. Defects revealed during the Warranty period will be removed free of charge by the Central Service of Eura-Tech Sp. z o.o. (hereinafter referred to as the "Service").
- The document confirming the conclusion of the above agreement and thus entitling you to pursue your rights is a correctly completed Warranty Card together with a document confirming the purchase (receipt, VAT invoice). Any changes (smudges, erasures, cross-outs, corrections, etc.) in the Warranty Card invalidate it.
- In the case of Products without Warranty Cards (e.g. wireless bells, gongs, signaling devices, detectors and others), the document confirming the conclusion of the contract is the sales document (receipt, VAT invoice).
- The warranty repair does not cover the activities specified in the Operating Instructions, which the Purchaser is obliged to perform on his own and at his own expense (e.g. installation, configuration, optimal protection against external conditions, maintenance, possible dismantling, etc.).
- The warranty does not cover:
 - accessories/consumables such as: frames and mounting screws, cables, proximity cards, power supplies with power cables, batteries and accumulators or other elements that are additionally attached to the Products - due to their nature, they have an operational lifespan,
 - mechanical, electrical, chemical and thermal damage or intentional damage to the Product and the defects caused by them,
 - damage and defects resulting from improper use or use inconsistent with the Instructions for Use, user negligence, improper storage or maintenance of the Product, as well as use of the Product contrary to safety regulations and contrary to its intended use,
 - damage to the Product that was not properly secured during transport to the Service (e.g. no transport packaging, failure to wrap the Product properly in protective foil, immobilization of the Product in the packaging, etc.),
 - damage to the Product for which the Purchaser has lost the Warranty Card,
 - damage caused by fire, flood, lightning strike (including indirect lightning), or other natural disasters, unforeseen accidents, liquid flooding, overvoltage in the electrical network, connection to the electrical network in a manner inconsistent with the Operating Instructions,
 - Products that have been modified, changed in design, repaired by breaking the warranty seal or in any other way.
- The Guarantor provides free spare parts and labor, in accordance with the terms and conditions set out in this Warranty, during the Warranty period specified on the last pages of the User Manual in the "Warranty Terms" section. The Warranty covers only and exclusively Product failures caused by defective parts and/or manufacturing defects.
- A complaint will only be considered if the Product in question is delivered to the Service together with:
 - Warranty Card (except for devices listed in point 6),
 - a correctly completed Repair Report Form
 - proof of purchase including the date and place of sale.
- Opening the device without the express consent of the Service, performing any repairs on your own or in an unauthorized service by unauthorized persons will be the basis for voiding the Warranty.
- The Buyer is obliged to deliver the damaged Product to the point of sale or directly to the Service. If the complaint is considered justified by the Service, the Product will be sent back to the Buyer after being repaired at the Guarantor's expense, using the courier services with which the Guarantor currently has cooperation (GLS).
- Delivery of a damaged Product by any forwarding agent at the Guarantor's expense, without prior arrangement with the Service, will result in refusal to accept the package.
- Any defects or damages to the Product revealed and reported during the Warranty period will be removed free of charge within 14 calendar days. In justified cases, this period may be extended, in which case the Buyer will be informed about the approximate repair time. The repair period begins on the first business day following the day the Product is delivered to the Service.
- The defective Product or its parts that are replaced become the property of the Service.
- Before starting any repair, the Service will always inspect and assess the degree of damage to the Product being complained about. If it is found that the Product:
 - is in working order,
 - was installed and connected contrary to the recommendations contained in the Operating Instructions,
 - it was damaged clearly due to the fault of the Buyer,
 - has a broken seal,
 - meets the conditions specified in point 8,then the Service treats such a complaint as unjustified and may charge the Buyer with the costs of transport and diagnosis of the device, in accordance with the Price List for Paid Repair Services applicable at the Service.
- The Buyer has the right to exchange the Product for another one with the same or similar technical and operational parameters if:
 - during the Warranty period, the Service will carry out 3 repairs, and the Product will still exhibit defects that prevent it from being used as intended,
 - The Service considers that the removal of the defect is impossible or within the time specified in point 14,
 - repair may result in excessive costs for the Service.
- In extreme cases, after prior consultation with the Buyer, the Service may:
 - extend the repair period for the Product if the required repairs cannot be performed due to unforeseen circumstances, such as: difficulties related to importing the device and/or spare parts, legal regulations preventing the performance of repairs, etc.,
 - decide on the refund in accordance with and on the basis of the price on the purchase invoice, if it is not possible to exchange the Product for another one.
- Neither the Guarantor nor the Service shall be liable for damage to other devices resulting from a failure of the Product.
- The Buyer has no right to claim reimbursement of lost profits due to the failure of the Product.
- Failure to collect the repaired Product after 4 weeks from the repair deadline specified in point 14 will be treated as a free surrender of the Product to the Service. The Service may donate the Product to charity or use parts of it for the needs of the Service.
- If you suspect that the shipment has been tampered with or that the Product being shipped has been damaged during transport, please follow the procedure below:
 - after receiving the shipment, always check the condition of the packaging in the presence of the forwarding employee (the shipment should be sealed with tape and/or the Service stamp, if it is not or is tampered with in any way, it means that the shipment was opened by unauthorized persons),
 - each time the contents of the shipment should be unpacked and checked in the presence of a forwarding employee, and if any damage to the contents of the package or any shortages are found, an appropriate report should be drawn up together.
- The Product Warranty does not exclude or limit the buyer's rights resulting from the non-conformity of the goods with the contract.

Central Service Eura-Tech Sp. z o.o.
Przemysłowa 35A
84-200 Węjerowo
Mon. - Fri, 08:00 - 17:00 e
mail: Serwis@eura-tech.eu

Used electrical or electronic equipment must not be stored (discarded) with other household waste. To avoid harmful effects on the environment and human health, used equipment should be stored in designated places.

For information about where and how to safely dispose of your used product, please contact your local authority or waste recycling company.

GDŚ registration number: E0011703WBNW



The EU declaration of conformity for this device can be found here
on the website www.eura-tech.eu



eurA-tecH sp. z o. o.

ul. Przemysłowa 35A, 84-200 Wejherowo
www.eura-tech.eu

All rights reserved.

Photos, drawings and texts used in this user manual are the property of "EURA-TECH" Sp. z o. o. Copying, distributing and publishing the entire manual or parts of it are prohibited without the author's consent!