

V1.0.0

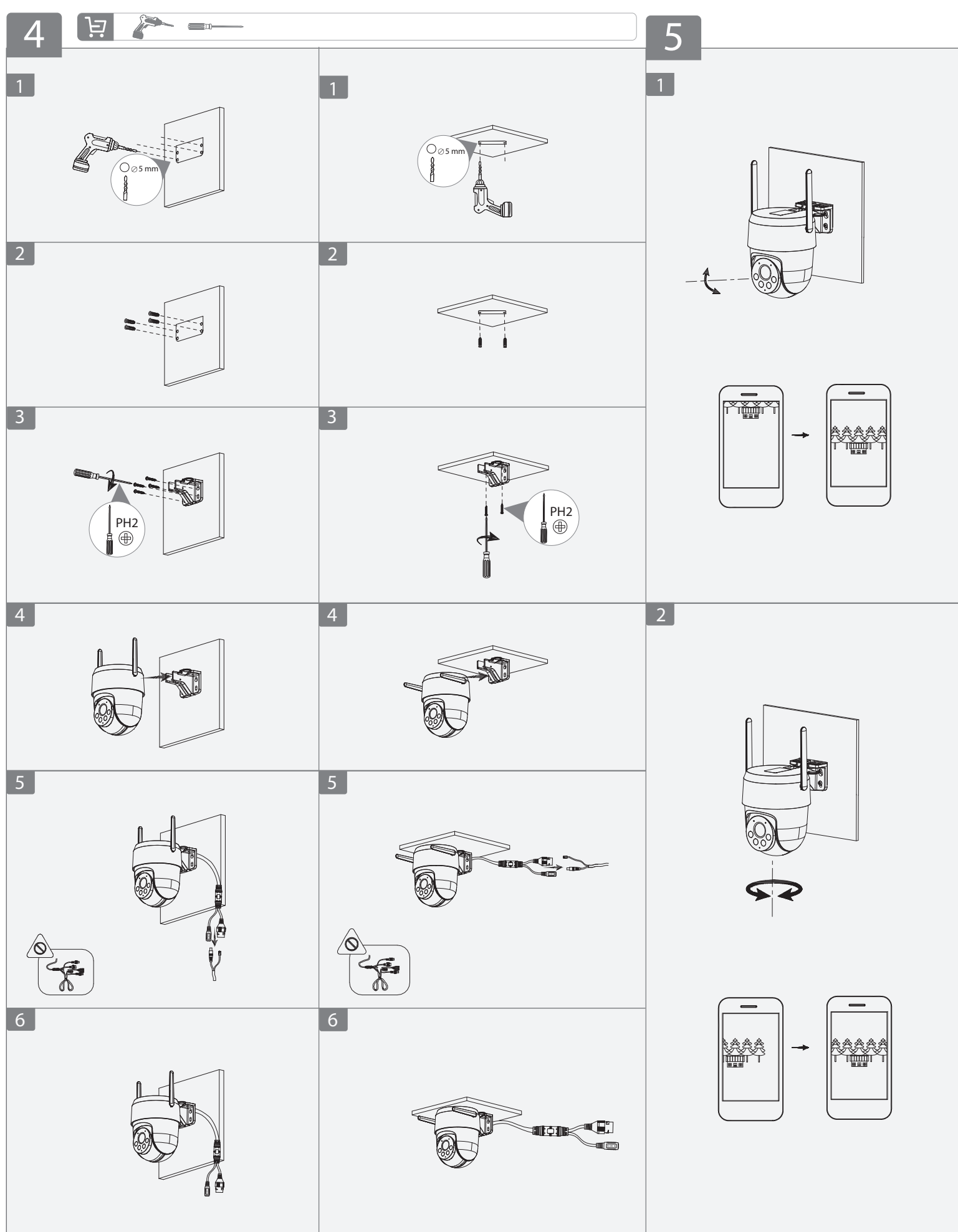


- Use the standard power adapter according to the device label. We will assume no responsibility for any problems caused by the use of a nonstandard power adapter.
- Do not aim the lens at intense light sources, including sunlight and incandescent light to avoid the lens becoming damaged.
- Transport, use and store the device under allowed humidity and temperature conditions.
- Do not place the device in a humid, dusty, extremely hot or cold state that has strong electromagnetic radiation or unstable illumination.
- Prevent liquid from flowing into the device to avoid damage to its internal components.
- Avoid heat sources, violent vibration, and overexposure during transportation, storage and installation.

Maintenance Requirements



- Do not disassemble the device without professional instruction.
- The dome cover is an optical component. Do not directly touch the photosensitive CMOS. Use an air blower to clean the dust or dirt on the lens.



Install the camera according to your actual needs, and then adjust the lens angle. Make sure that the mounting surface is strong enough to hold at least 3 times the weight of the camera (part 4&5).

LED Status	Device Status
Solid green	Working properly
Fastly flashing green	Configuring network
Slowly flashing green	Preparing network configuration
Solid red	Starting/Restarting
Slowly flashing red	Wi-Fi connection failed
Flashing red and green	Updating firmware
Off	Resetting to factory default

If you need to reset the camera, press and hold the reset button for 5 seconds.